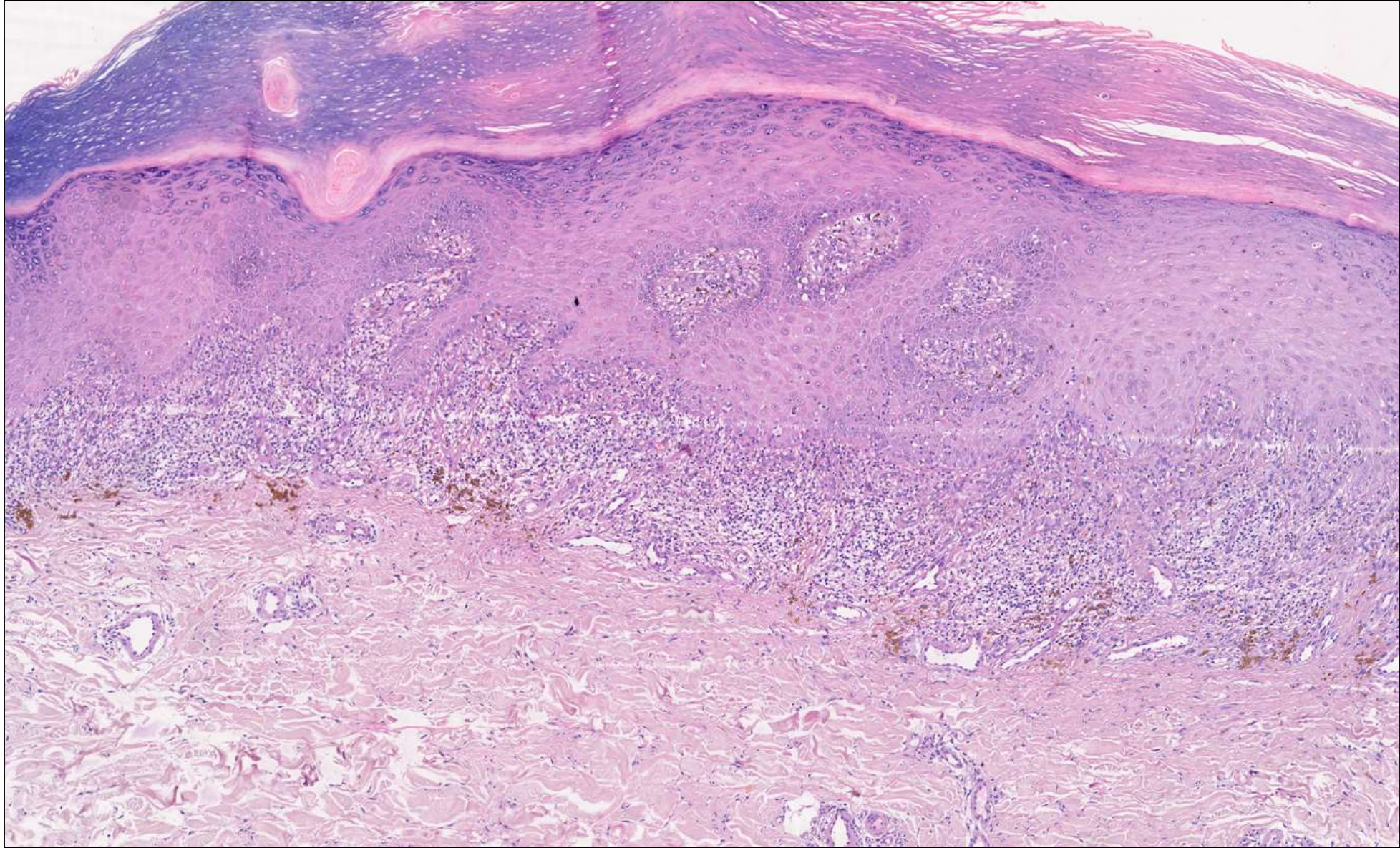


DERMA PEARLS: DERMOPATH PEARL - 2

Multiple discrete hyperpigmented plaques present bilaterally over both dorsum of feet extending onto the lower limb up to the mid-calf



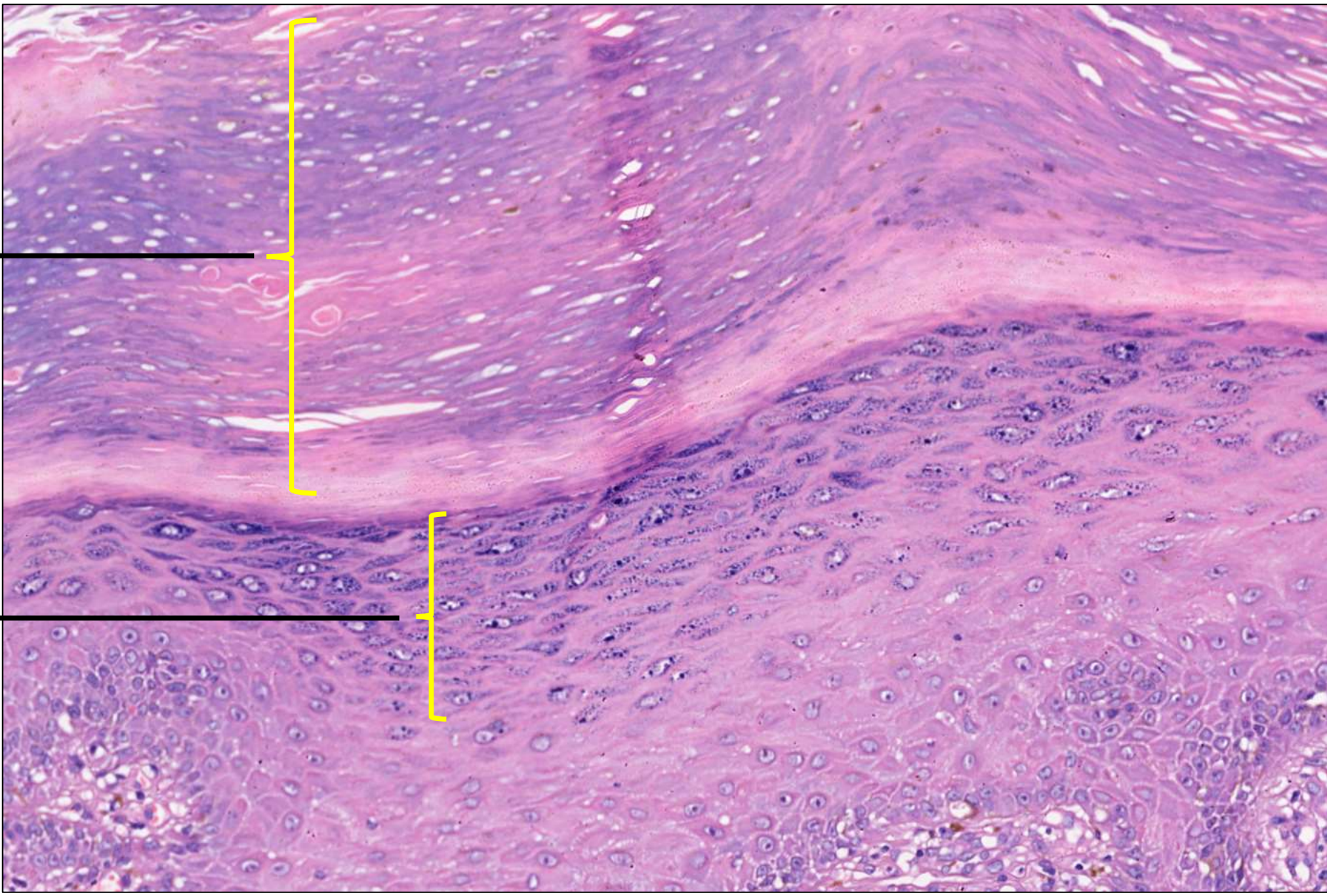
Lichen planus



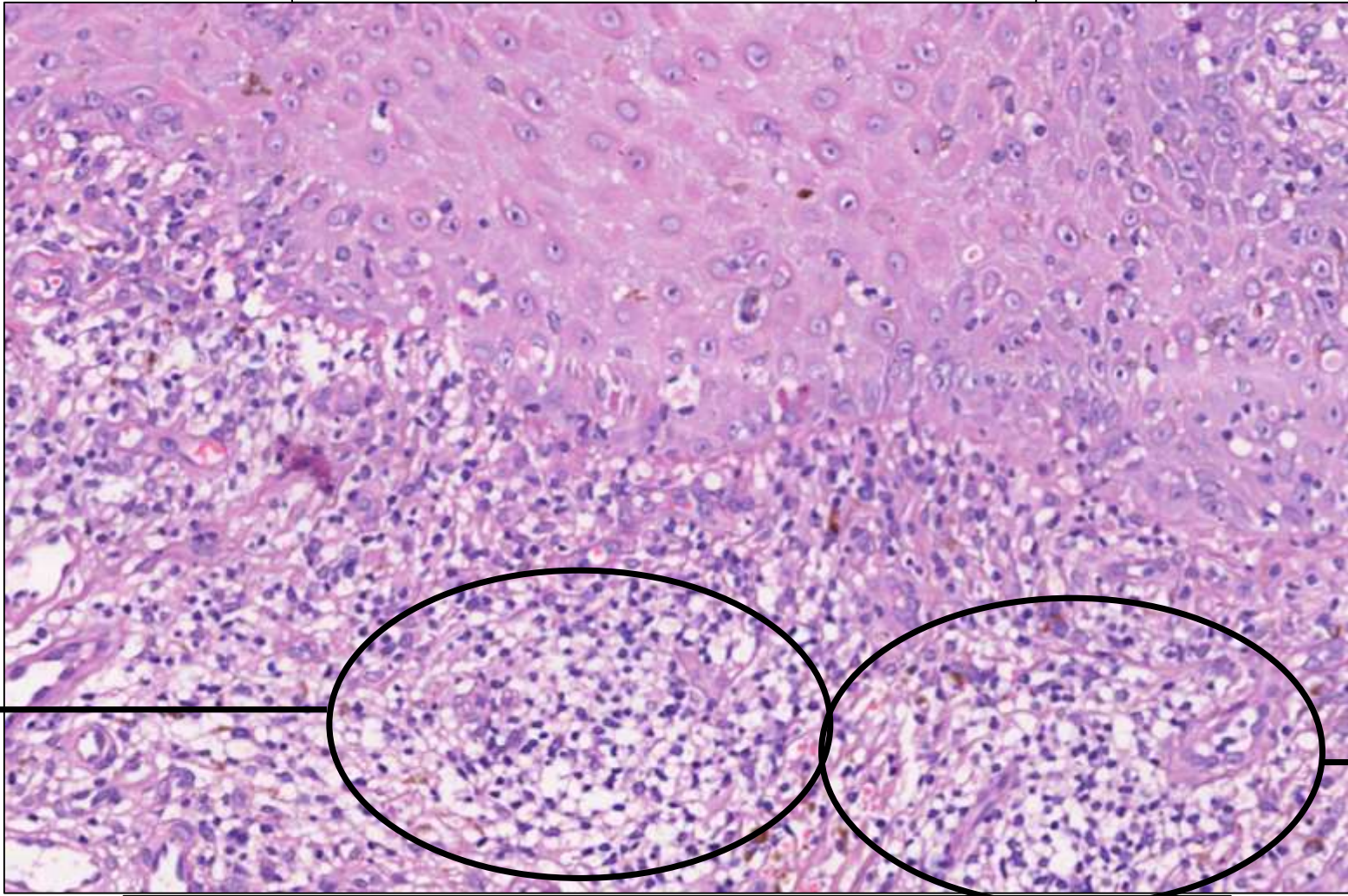
Blurring of dermo-epidermal junction

Hyperkeratosis

Hypergranulosis



Lymphocytic basal layer degeneration



Lymphocytes

Lymphocytes

Lymphocytes trying to engulf the basal layer of epidermis