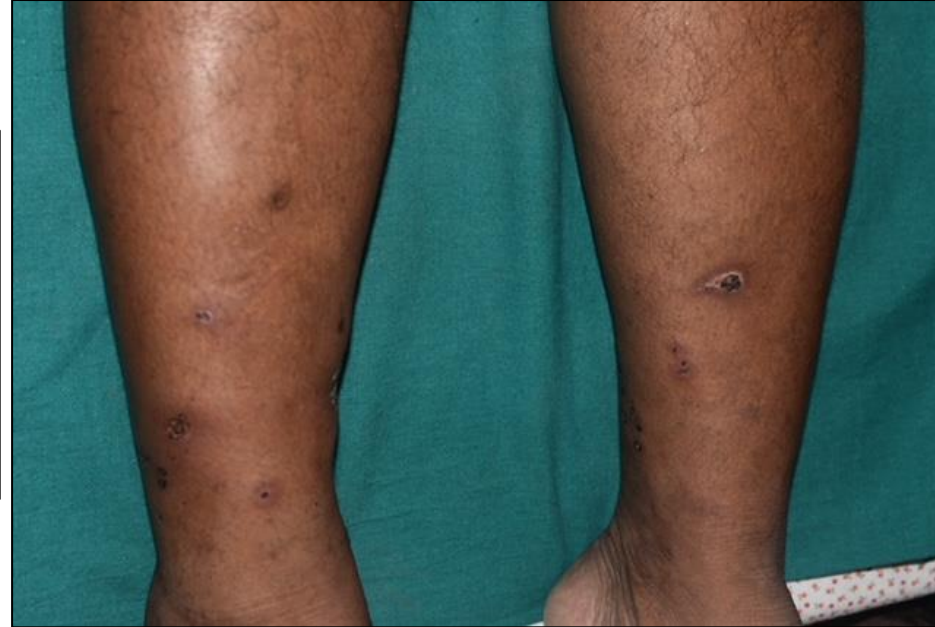
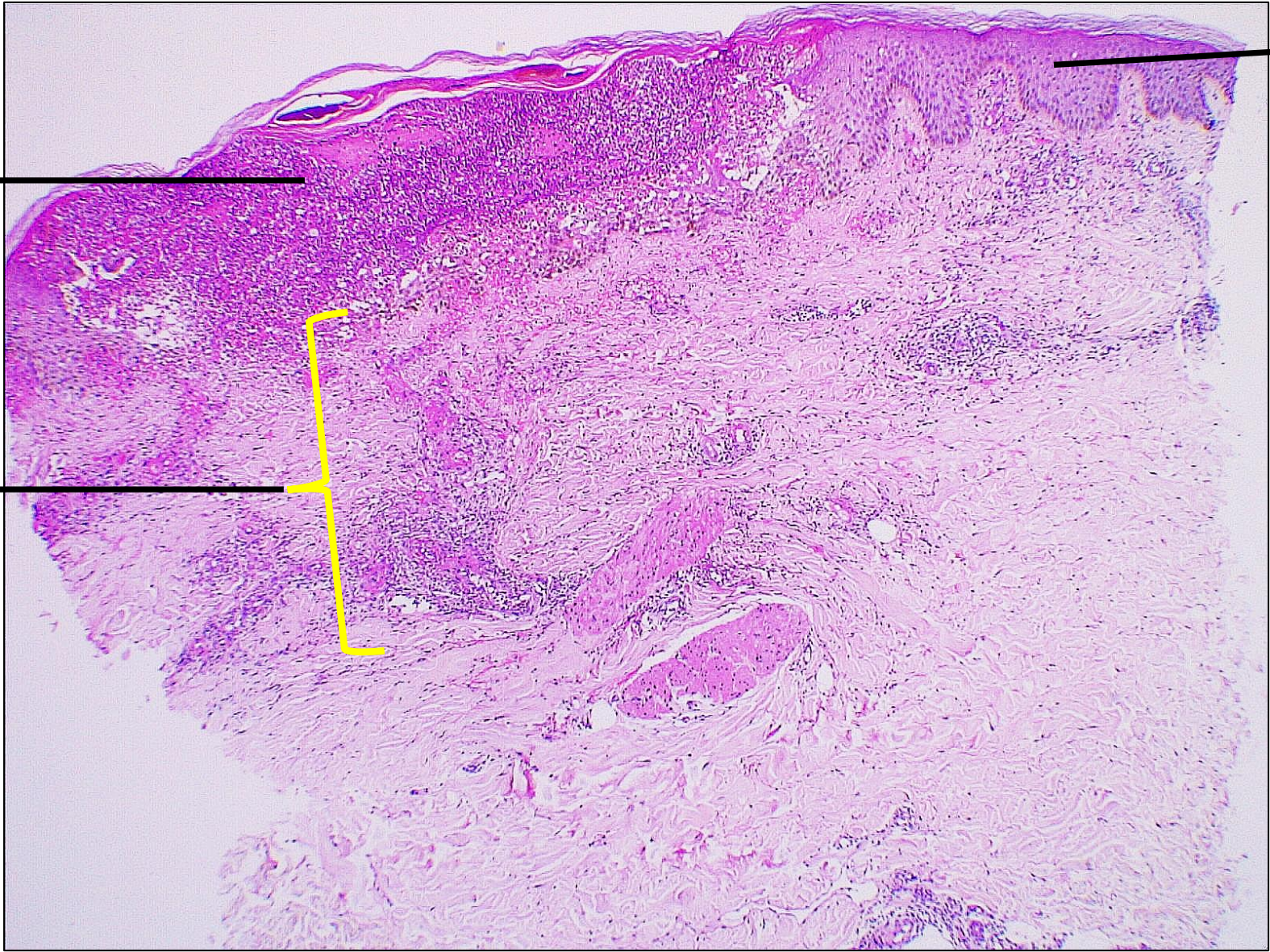


60/M,  
Multiple ulcers and  
erythematous papules with  
necrotic crust over bilateral legs  
for 1 month;  
Associated with pain.



Courtesy: Dr T Narayana Rao, NR Skin & Cosmetology Centre,  
Prof & HOD, GVPIHCMT, Visakhapatnam





There is epidermal ulceration



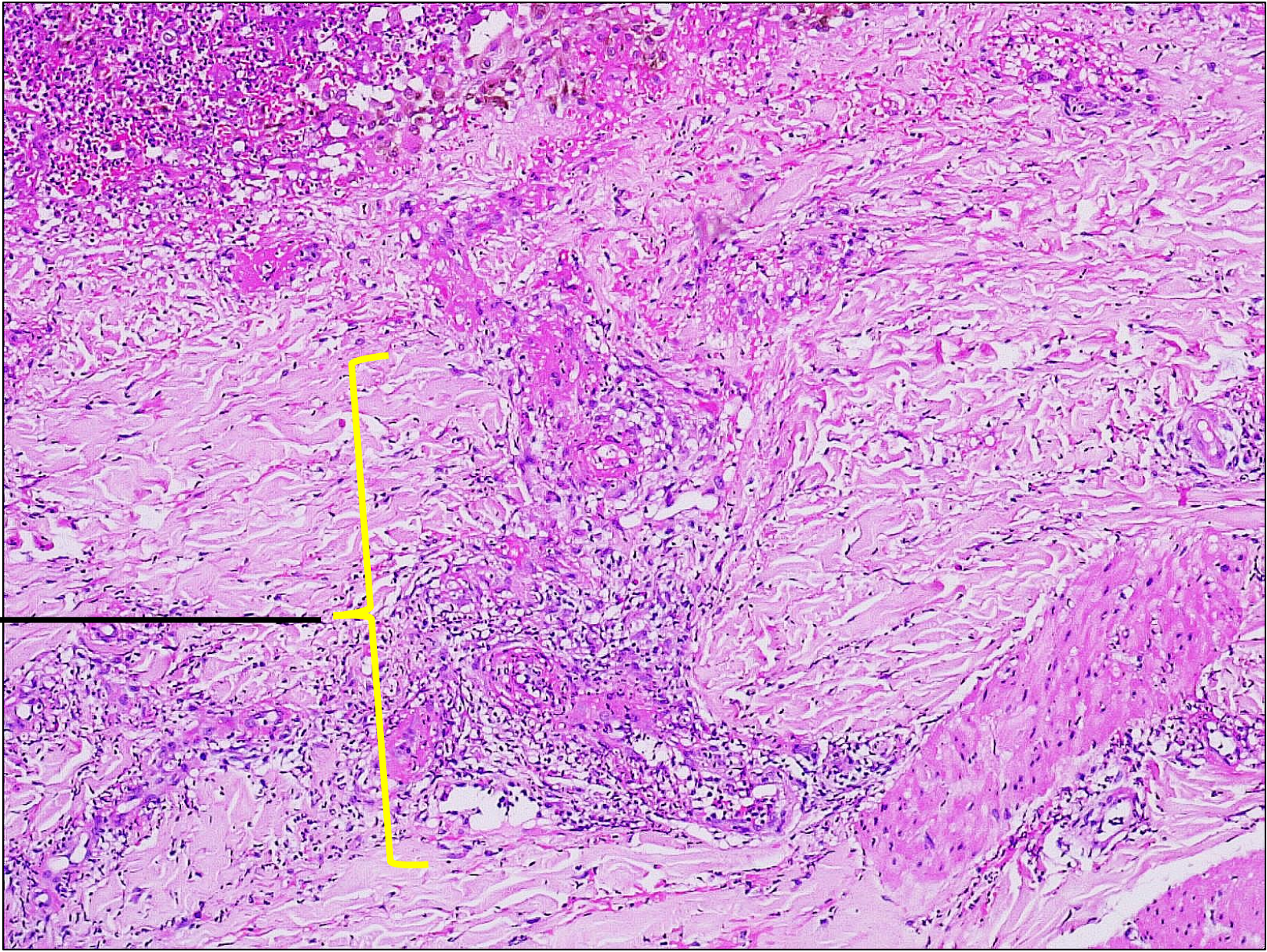
Superficial dermis shows inflammation



Intact epidermis



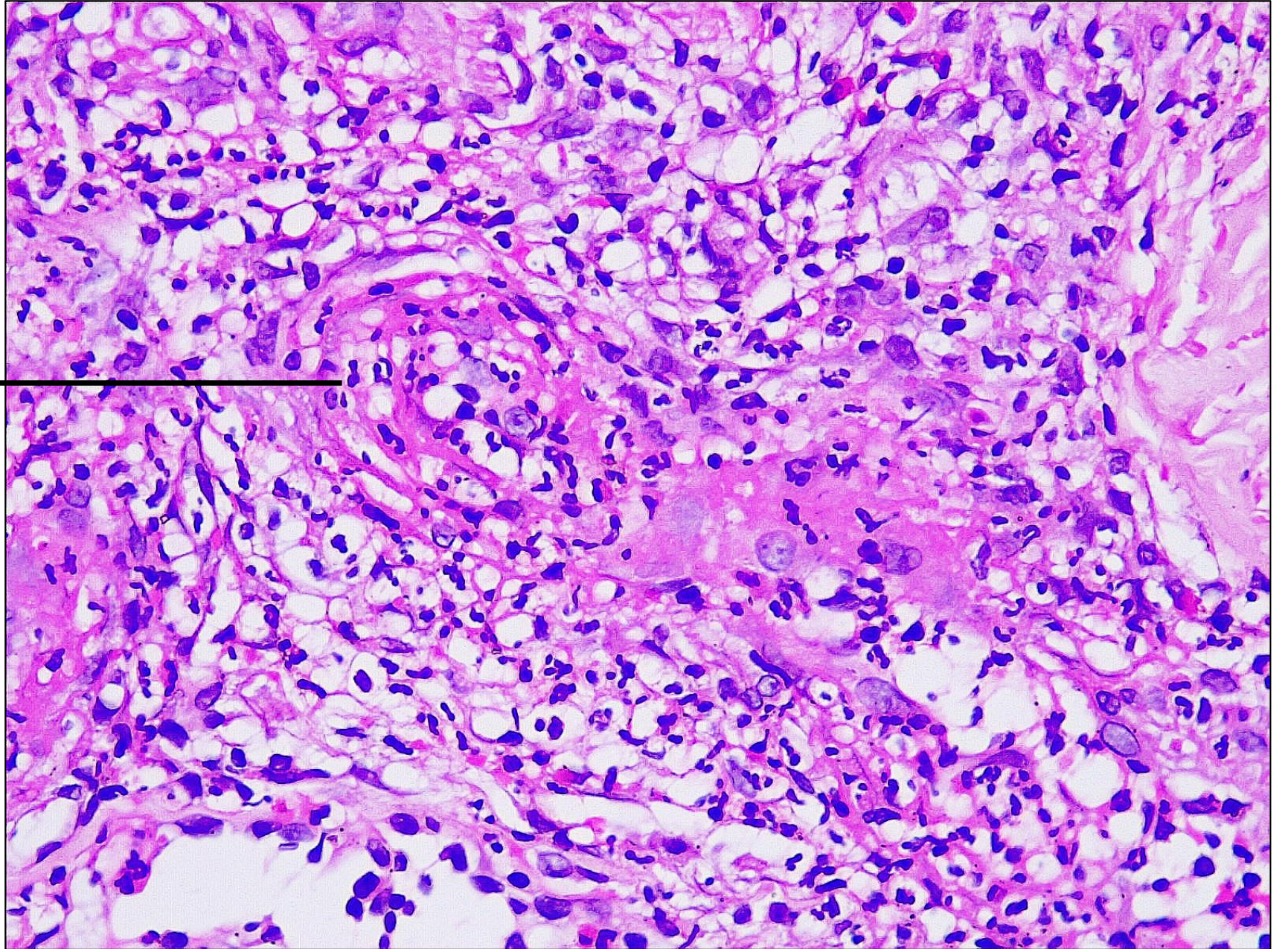




Superficial dermis  
shows perivascular  
inflammation

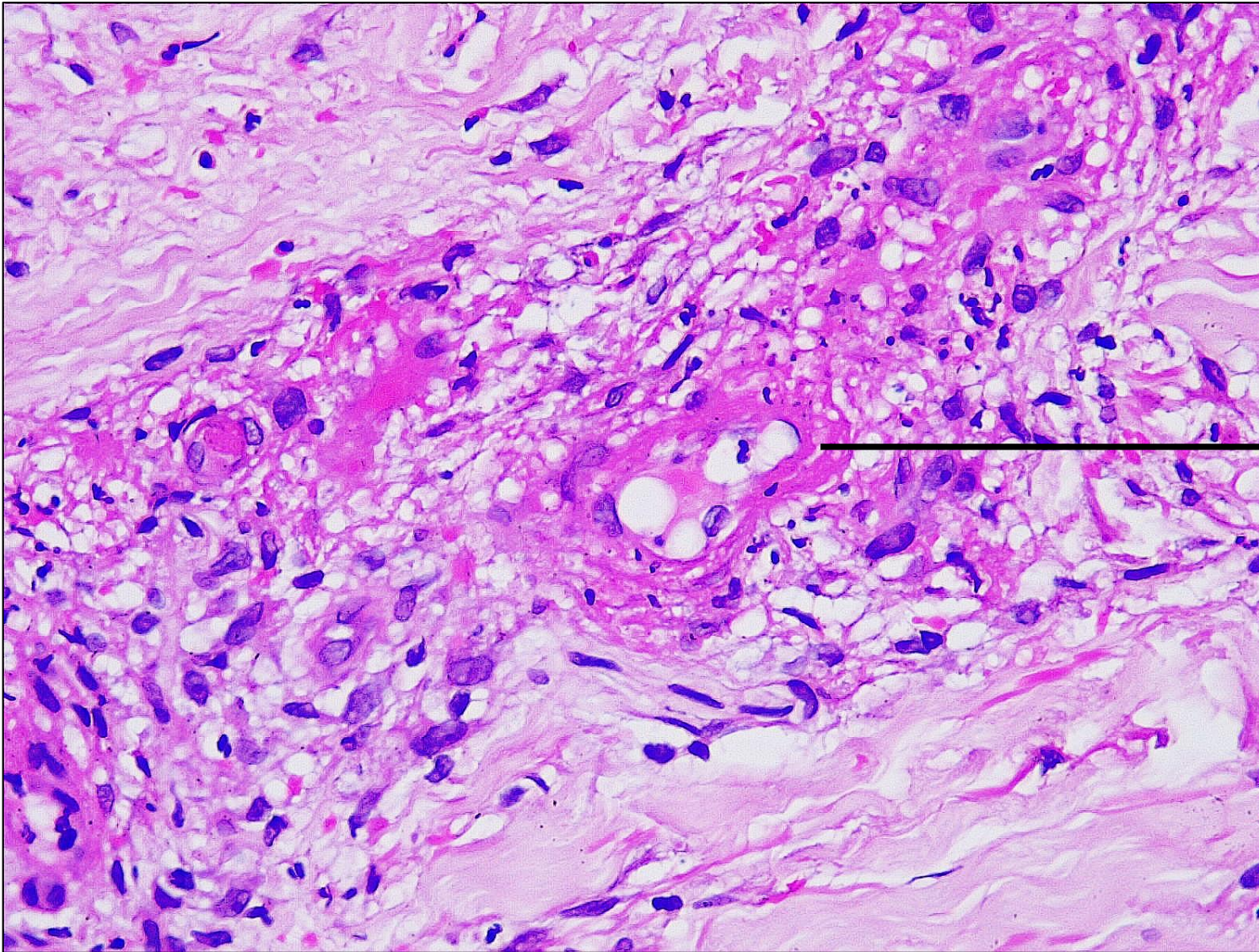


In addition, the small vessels  
also show transmural  
neutrophilic infiltrate





# Diagnosis : Small vessel neutrophilic Vasculitis



Few vessels show  
fibrinoid necrosis of  
the vessel walls