

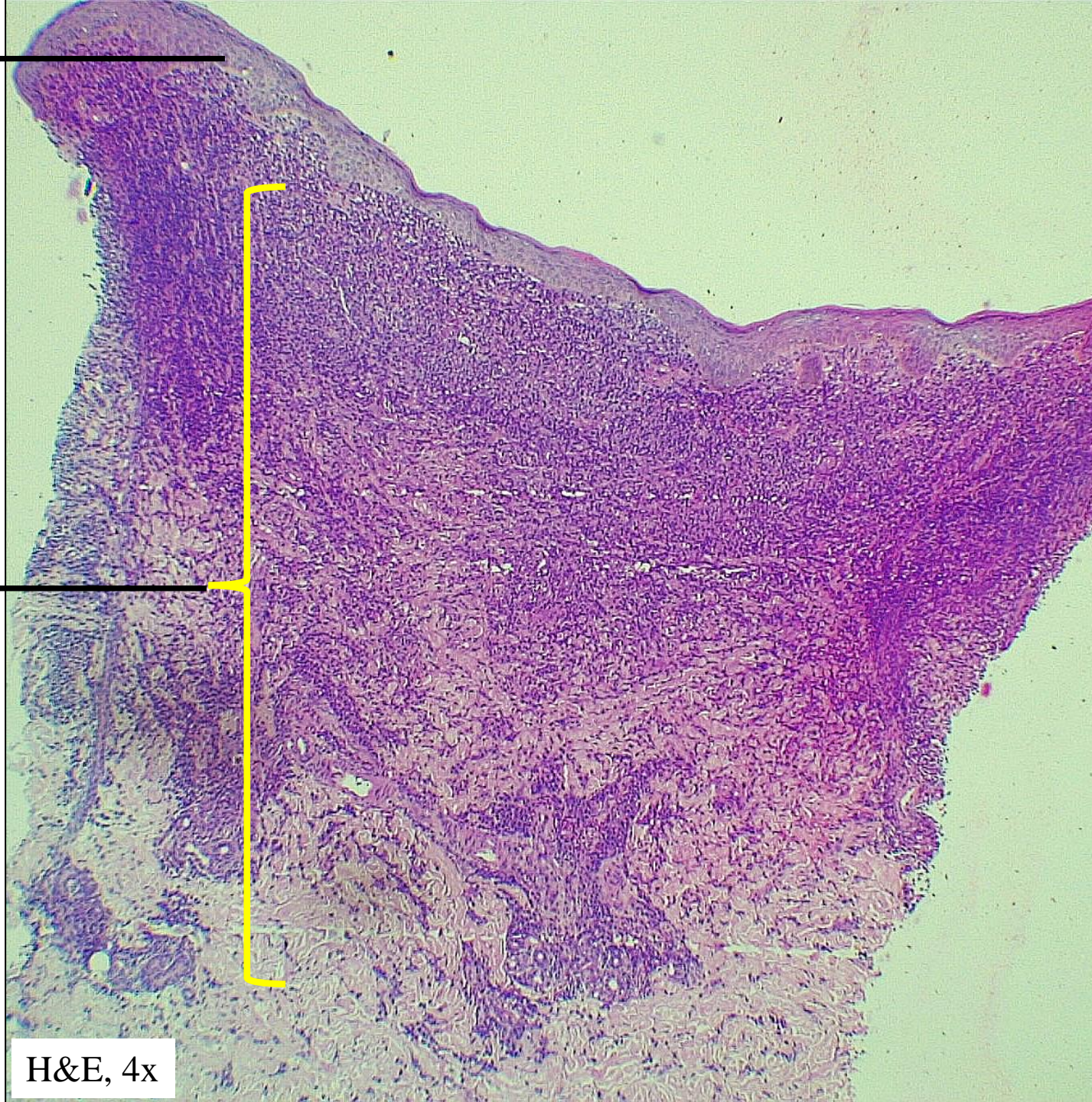
## DERMA PEARLS: DERMOPATH PEARL - 11

5 months / Mch,  
Asymptomatic lesion over left  
lower leg for 3 months;  
History of recurrent bulla over  
the lesion which spontaneously  
resolve in 4 to 5 days

O/e: Annular infiltrative plaque  
with prominent follicular  
openings over the lateral side of  
the left lower leg.



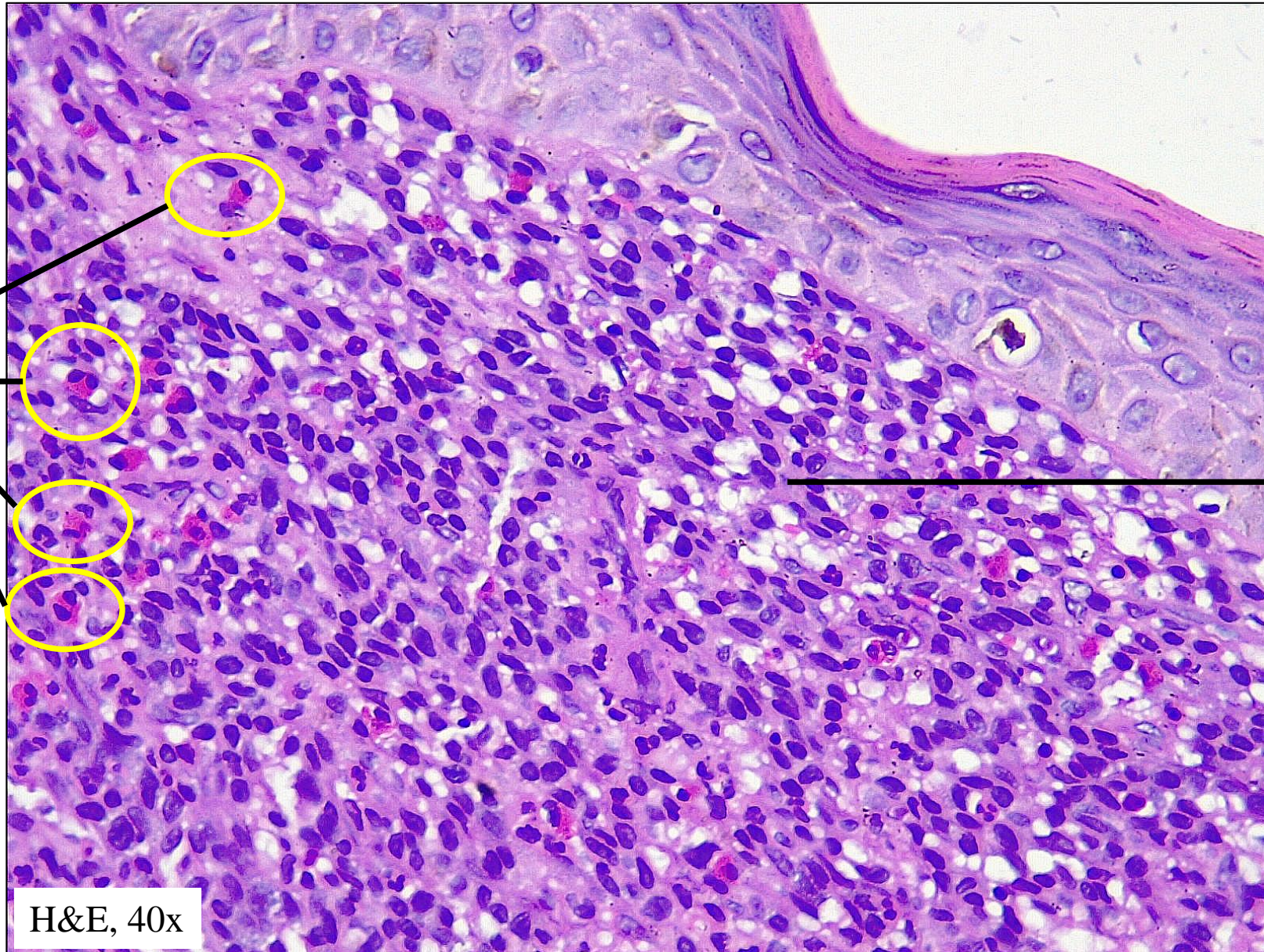
Thin epidermis ←



Superficial and deep  
dermis show dense  
inflammation ←

H&E, 4x

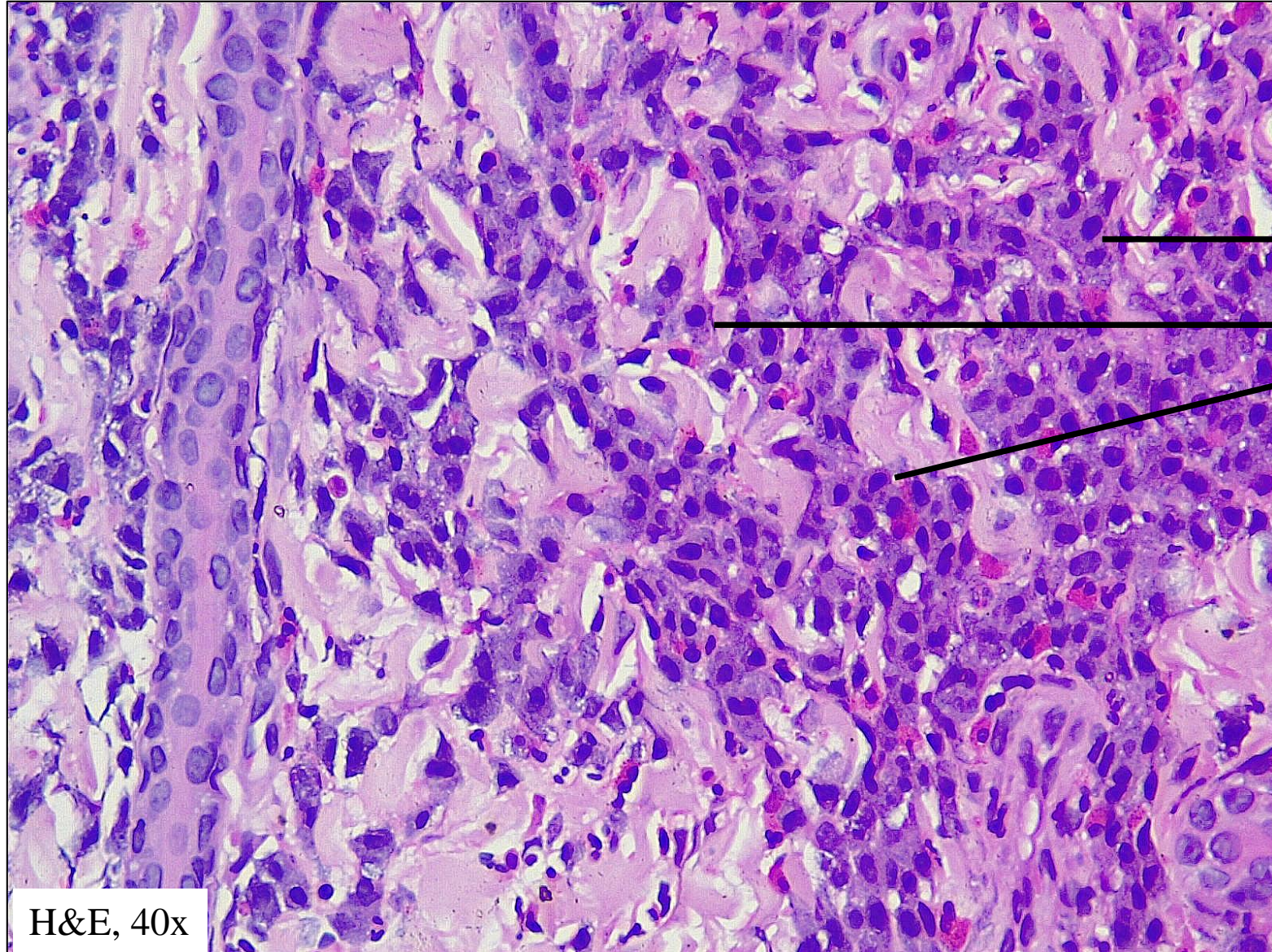
Dense infiltration with mast cells and few eosinophils



Eosinophils

Except eosinophils, all the other cells are mast cells

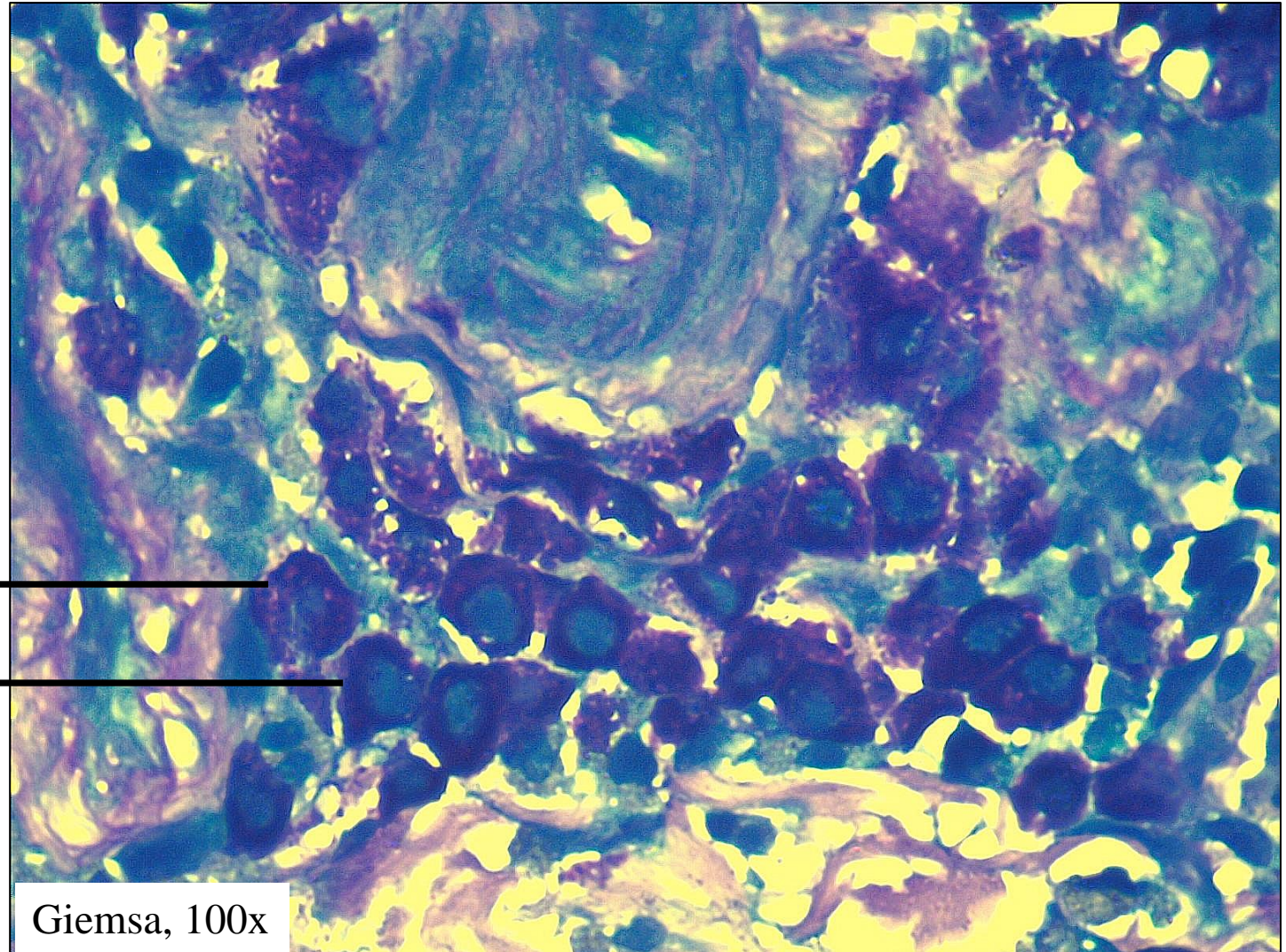
H&E, 40x



In this area, the mast cells are easily identified with their abundant granular cytoplasm and centrally placed nucleus

H&E, 40x

# Diagnosis : Cutaneous Mastocytosis



Giemsa stain highlighting  
the mast cell granules

Giemsa, 100x