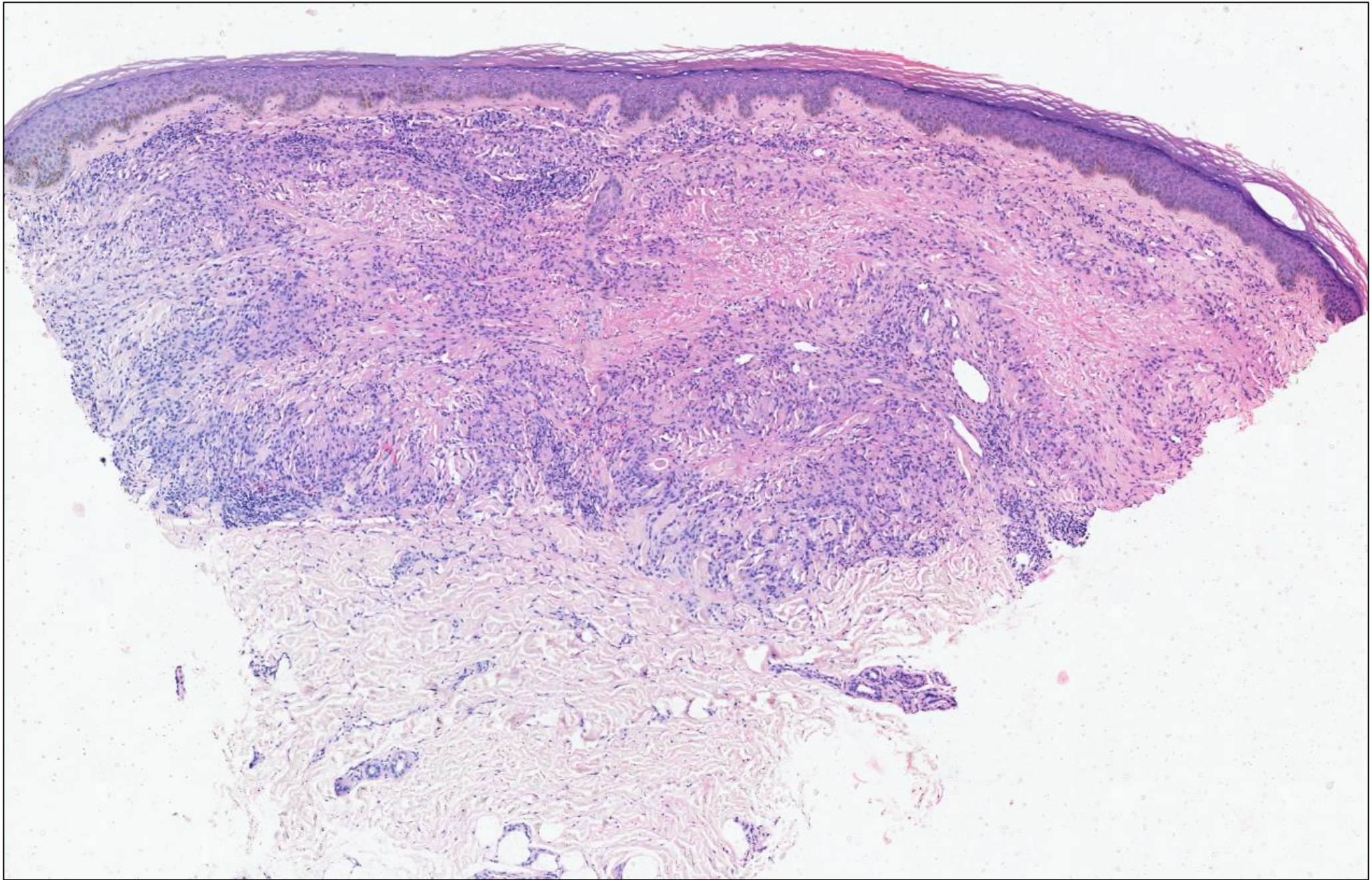


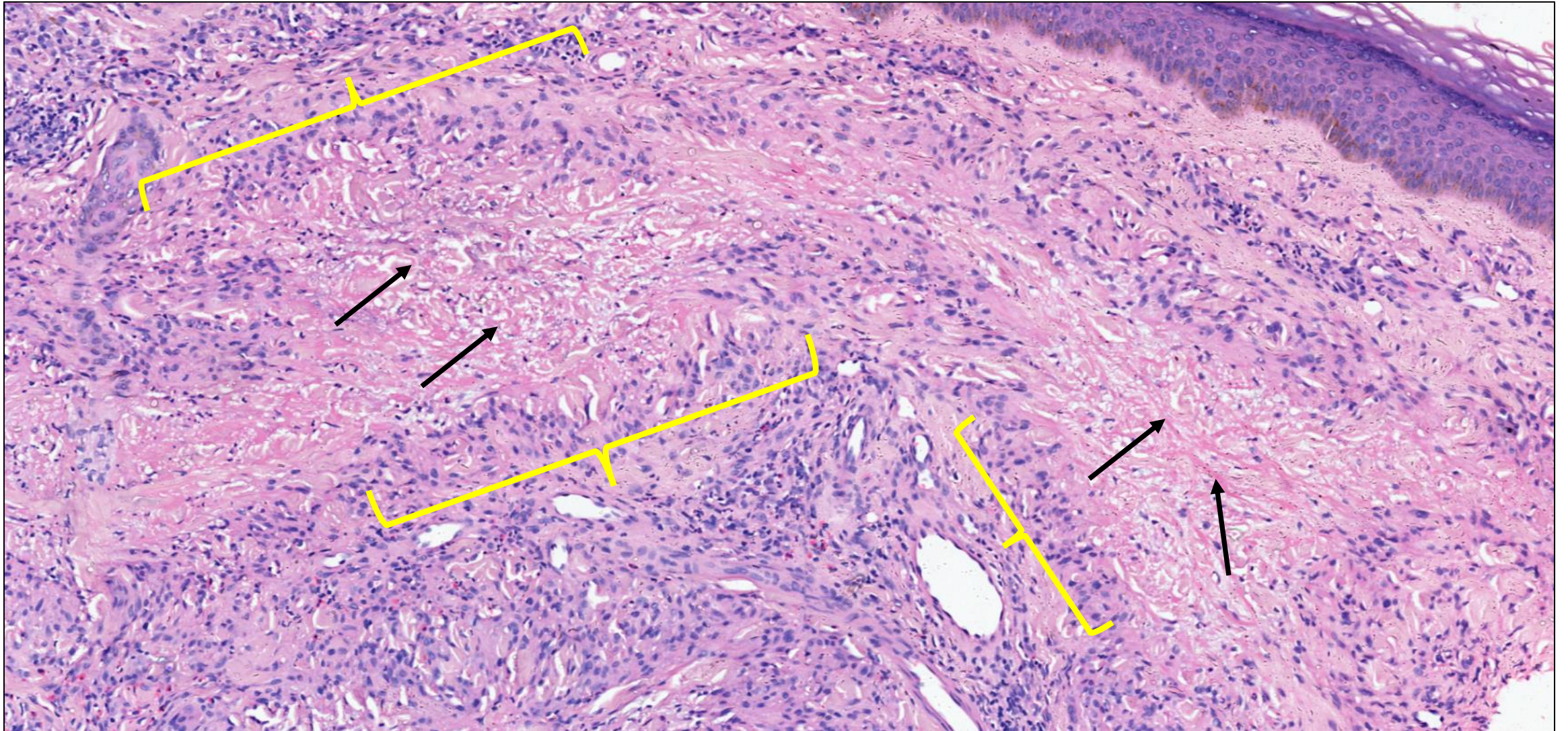
DERMA PEARLS: DERM PATH PEARL - 3

49/F,
Asymptomatic skin coloured lesions for 2
months;
Skin colored to yellowish papules, few with
necrotic centre, both upper limbs and elbows.

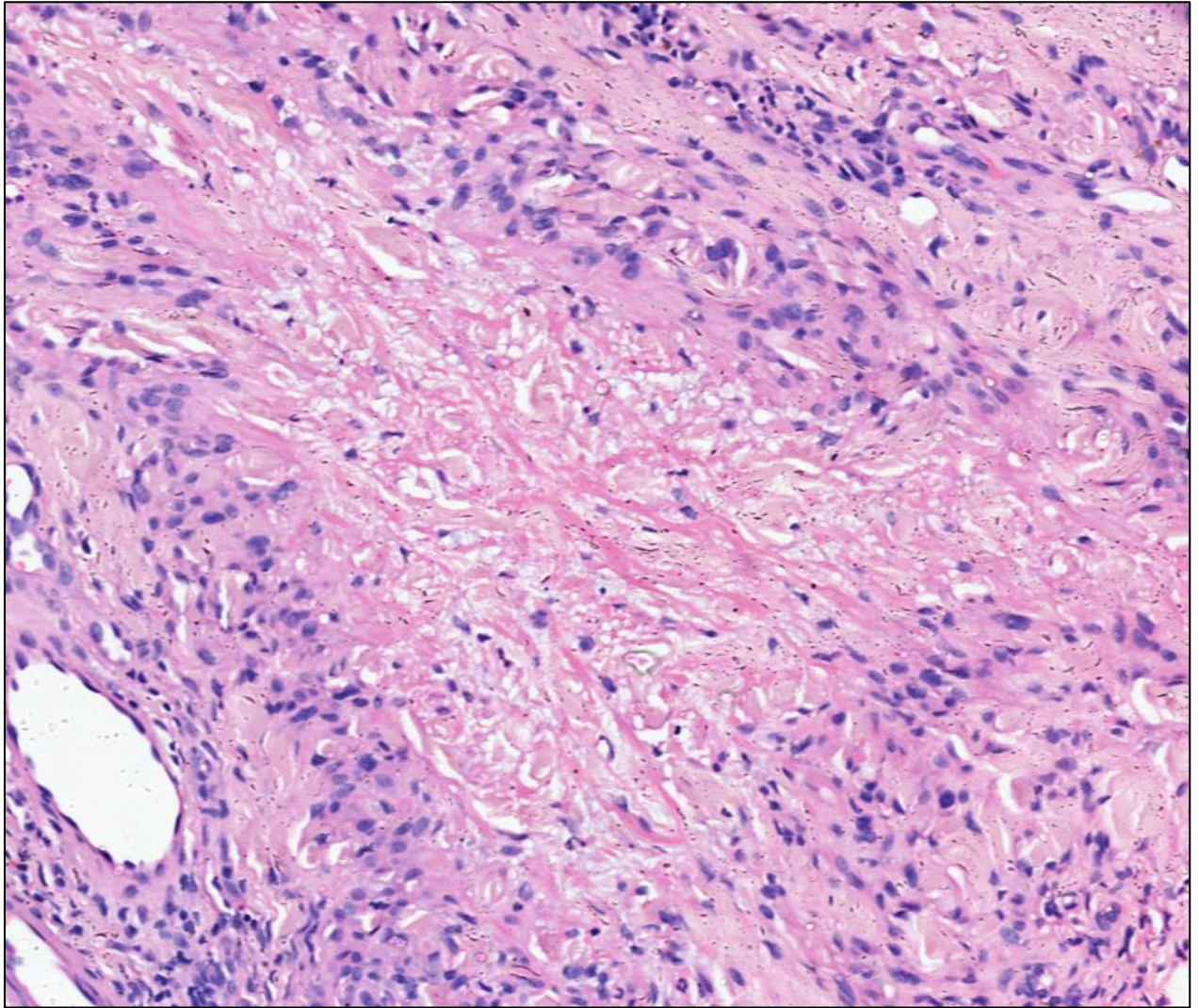
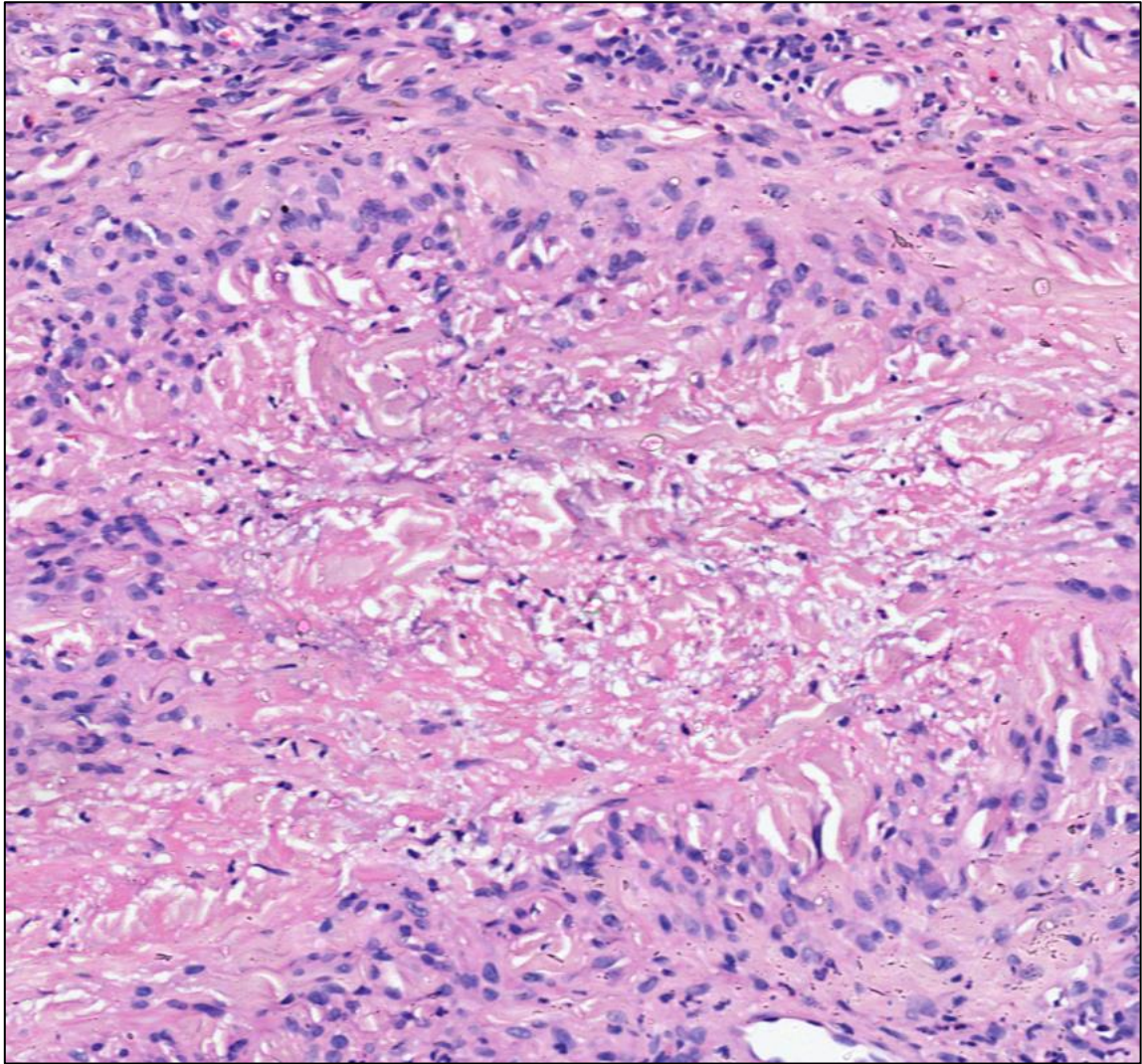




Areas of collagen degeneration (black arrows) with peripheral palisading of histiocytes (yellow flower brackets)



Areas of collagen degeneration with peripheral palisading of histiocytes



Diagnosis : Granuloma annulare

