

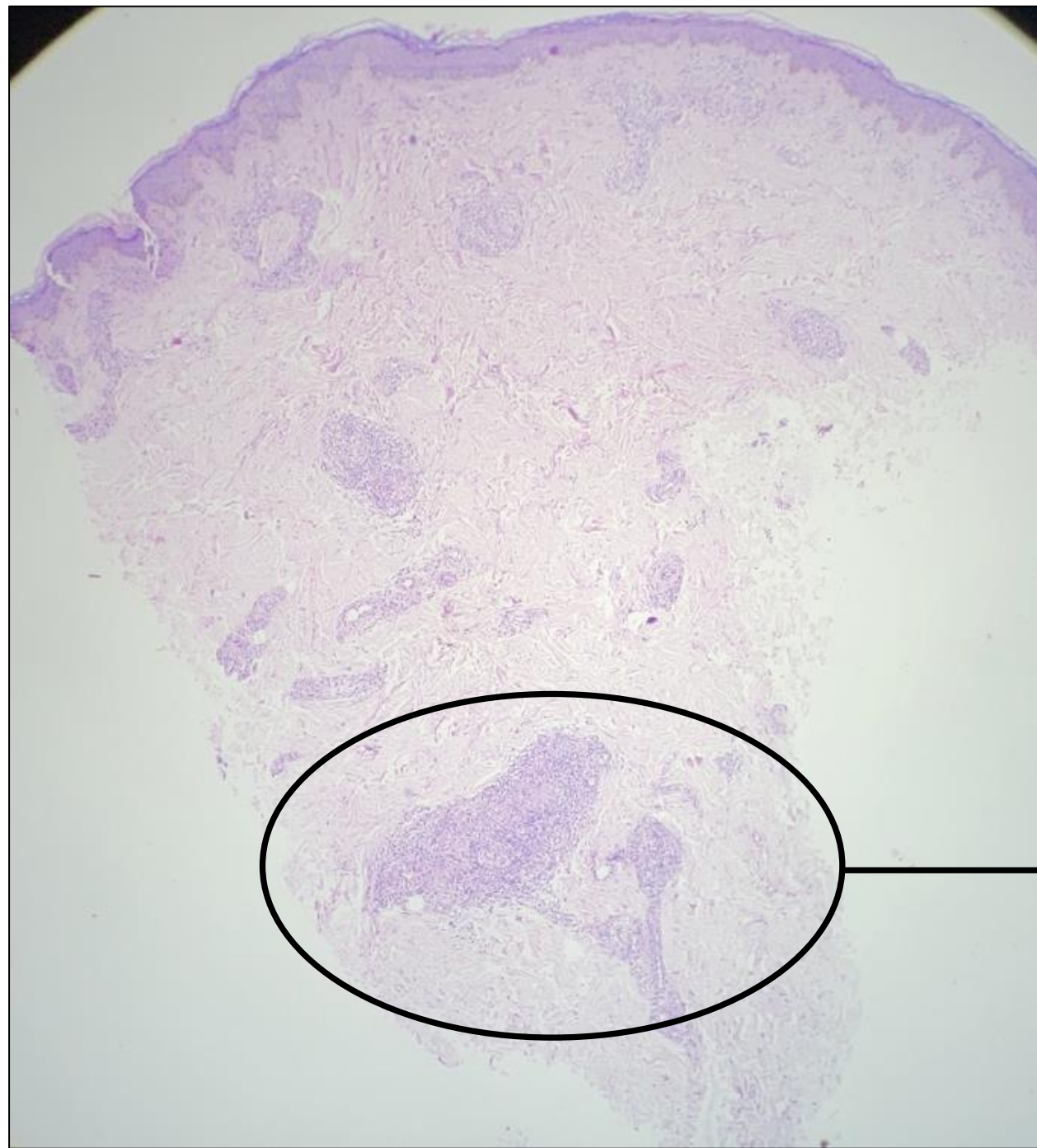


DERMA PEARLS: DERMPATH PEARL - 7

60/M,
Multiple hypopigmented and
hypoesthetic patches over upper
limbs and lower limbs for 2 yrs

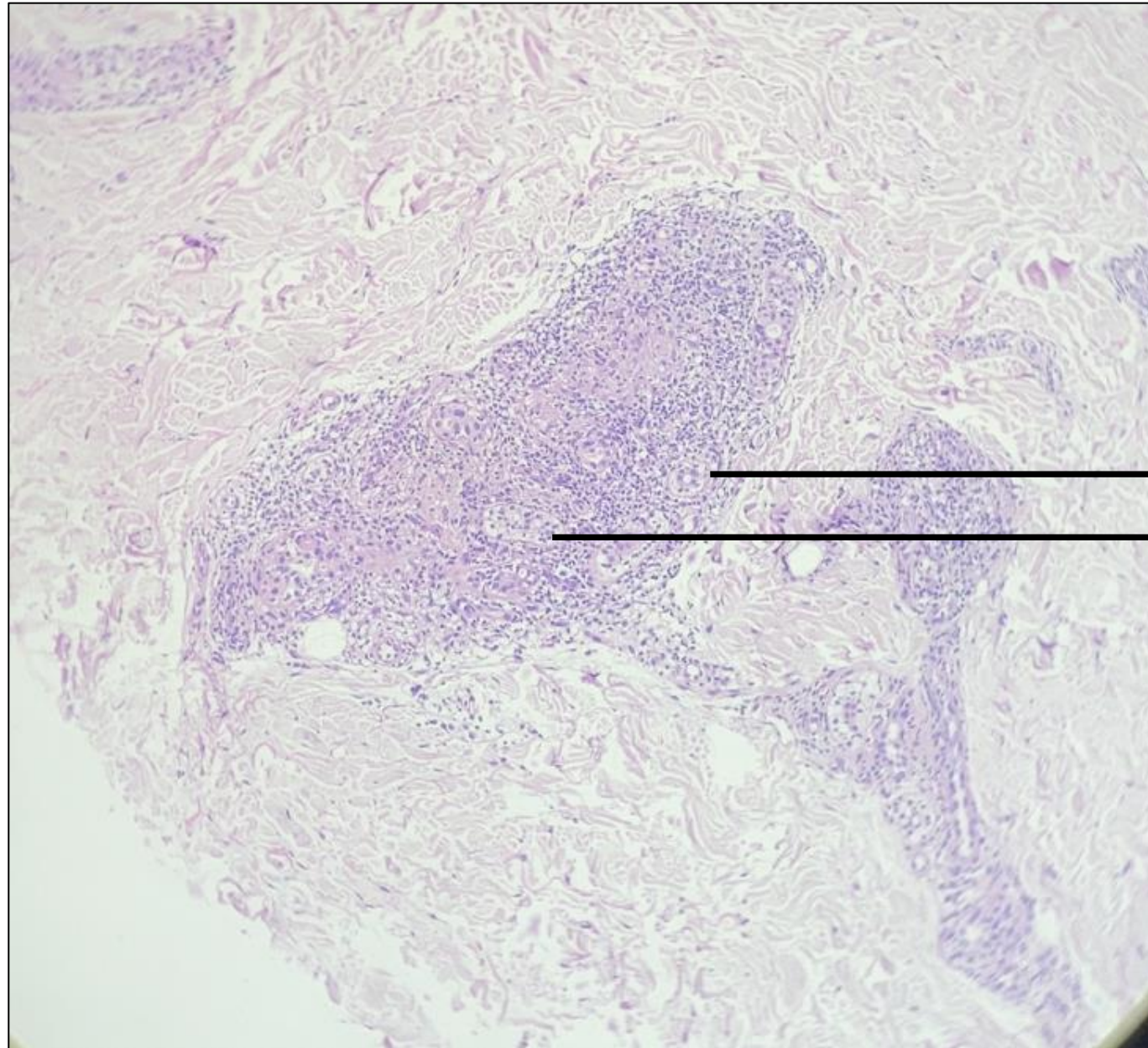


Courtesy: Dr M Jaya Kumar, Dr JK Skin Care, Vizianagaram



Mild inflammation is noted
mainly in the deep dermis

The inflammation is mainly peri-eccrine in distribution



Eccrine ducts

Diagnosis : Borderline tuberculoid leprosy

