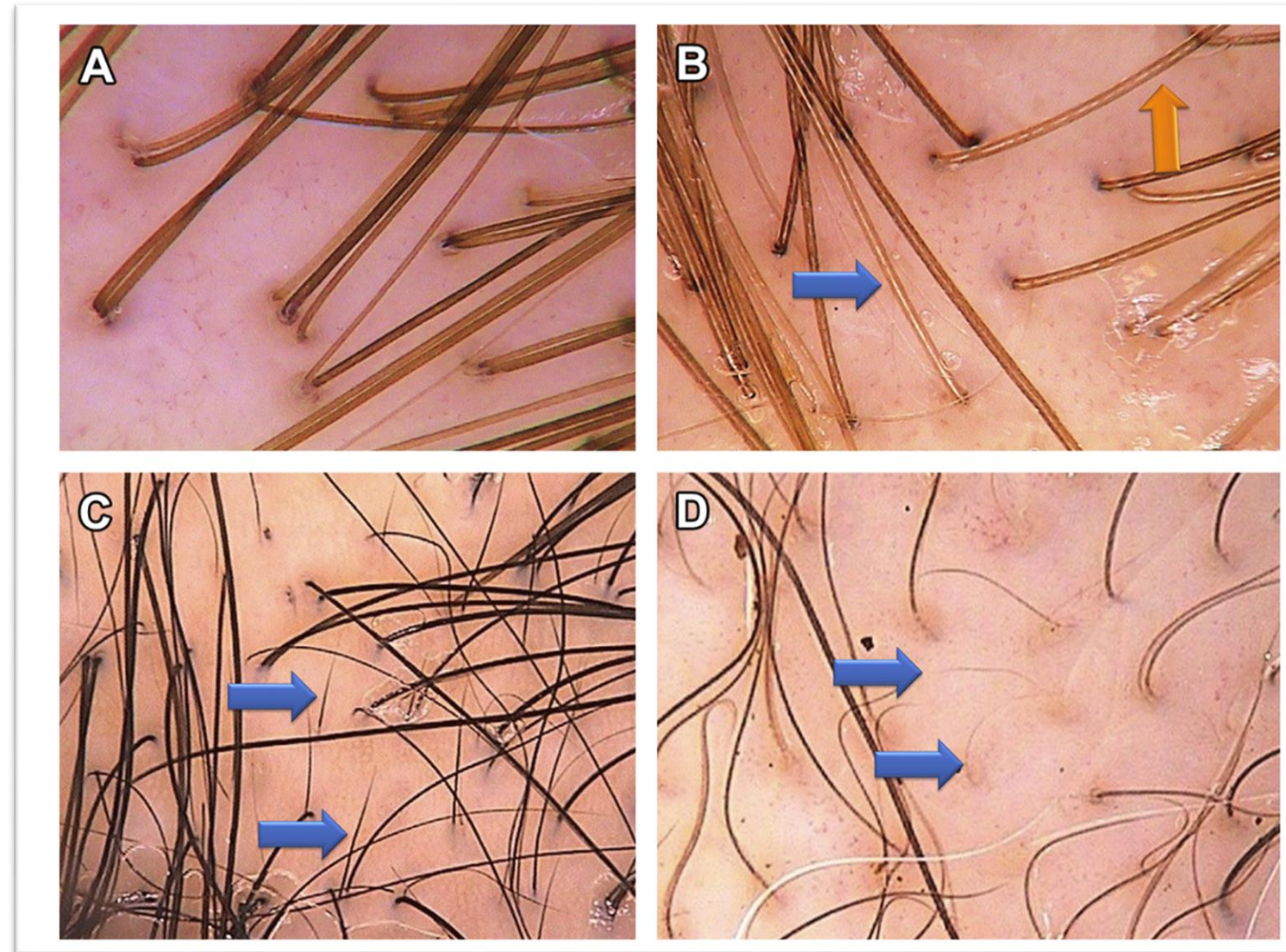


## BASICS IN TRICHOSCOPY-2

- A normal terminal hair is uniform in thickness and color throughout its length.
- An individual may have hair shafts that differ from each other by color and by thickness.

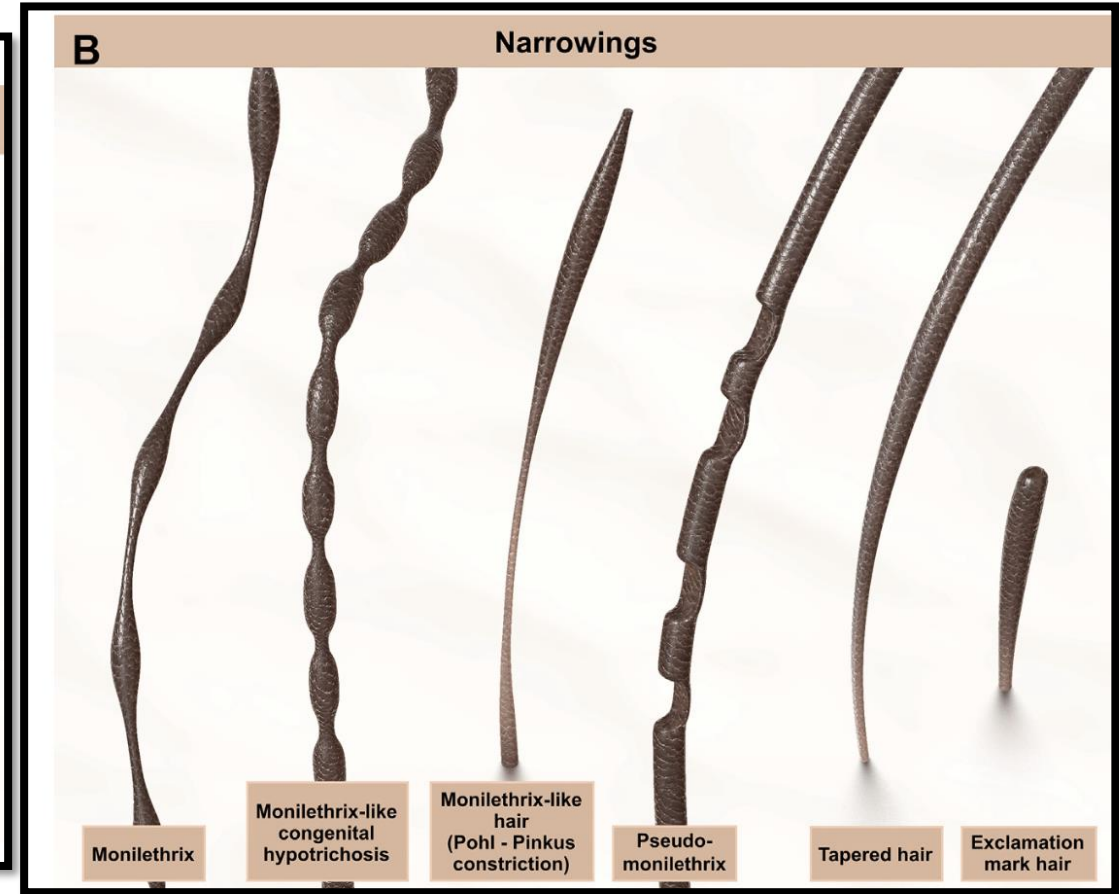
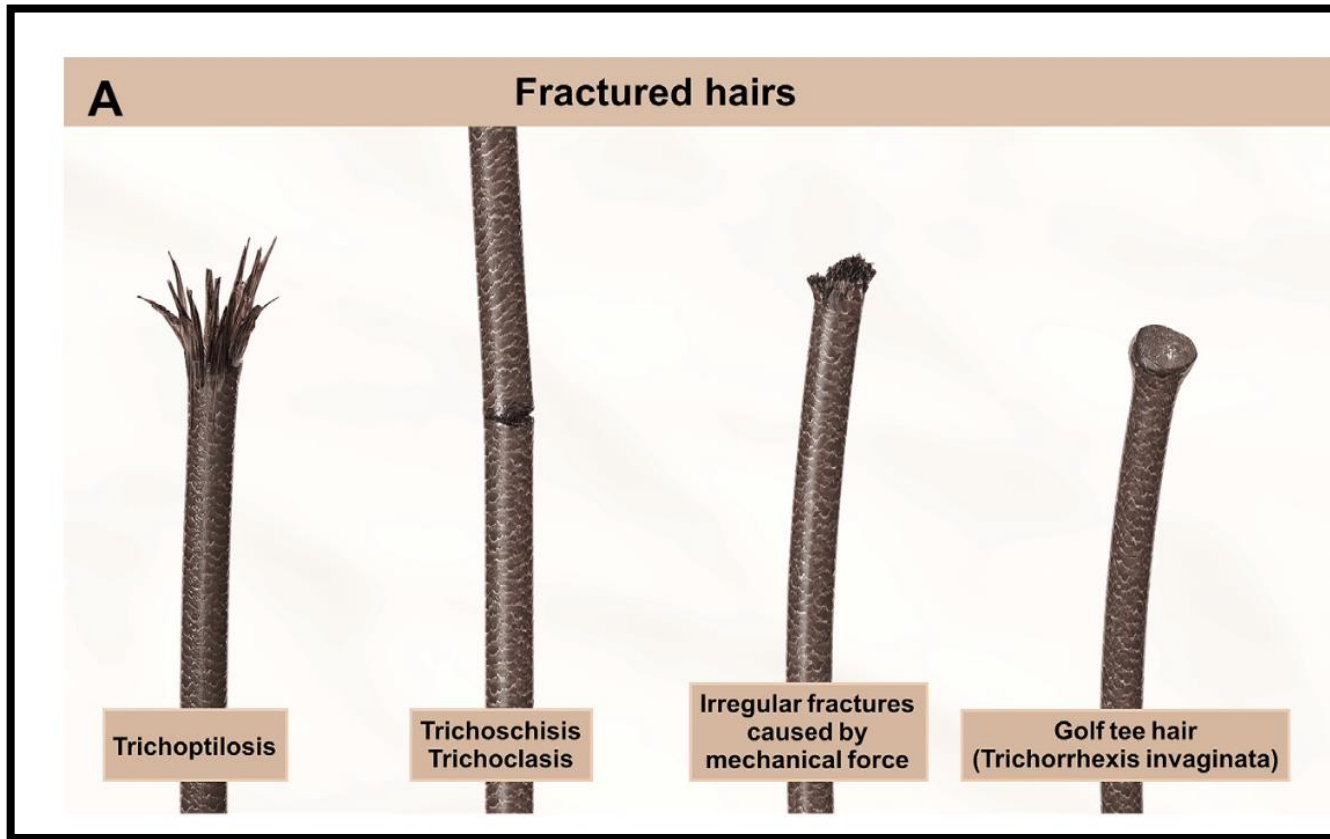
Variants of normal hair shafts in trichoscopy:

Normal terminal hairs (A),  
 Hairs with a continuous medulla (blue arrow) and fragmented medulla (orange arrow, B),  
 Upright regrowing hairs (blue arrows, C) and  
 Vellus hairs (blue arrows, D).



## CLASSIFICATION OF HAIR SHAFT ABNORMALITIES IN TRICHOSCOPY

- Types of hair shaft abnormalities may provide clues for differential diagnosis of inherited and acquired causes of hair loss.



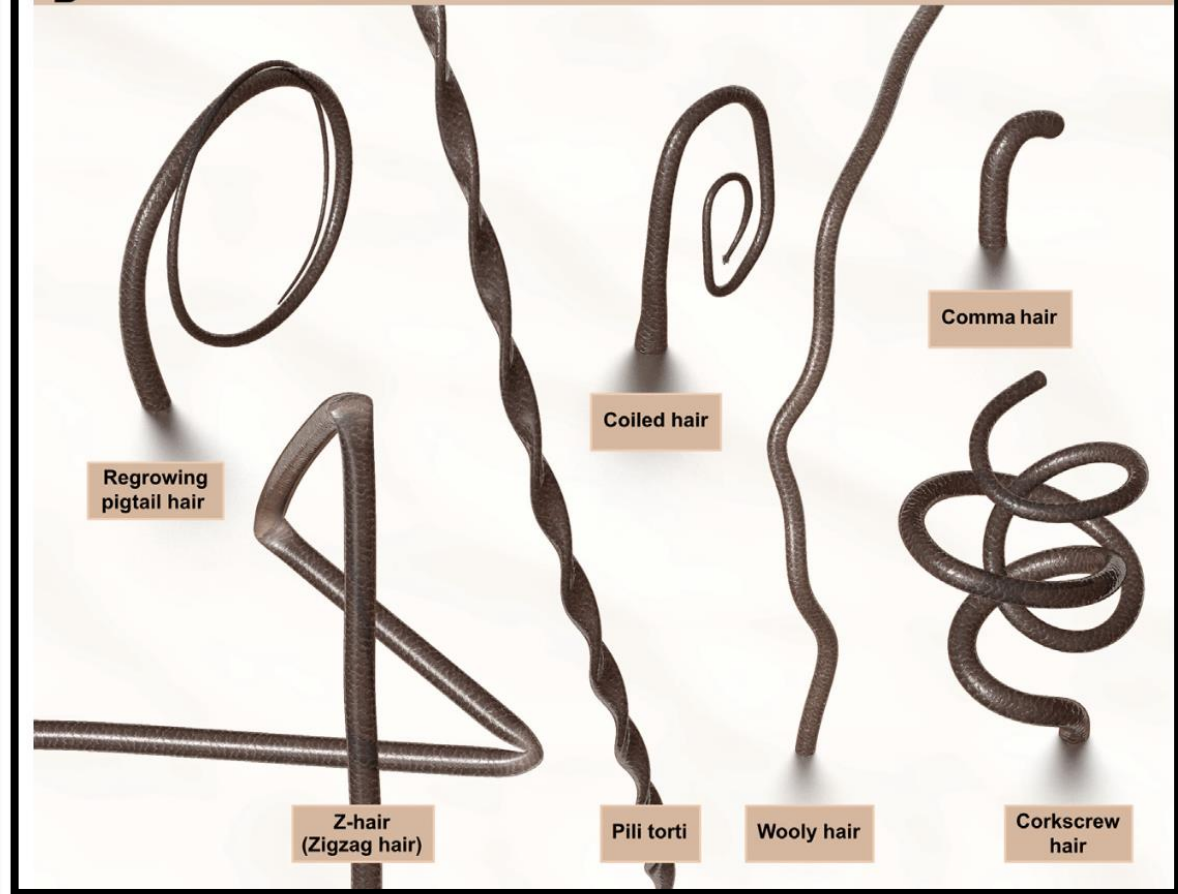
C

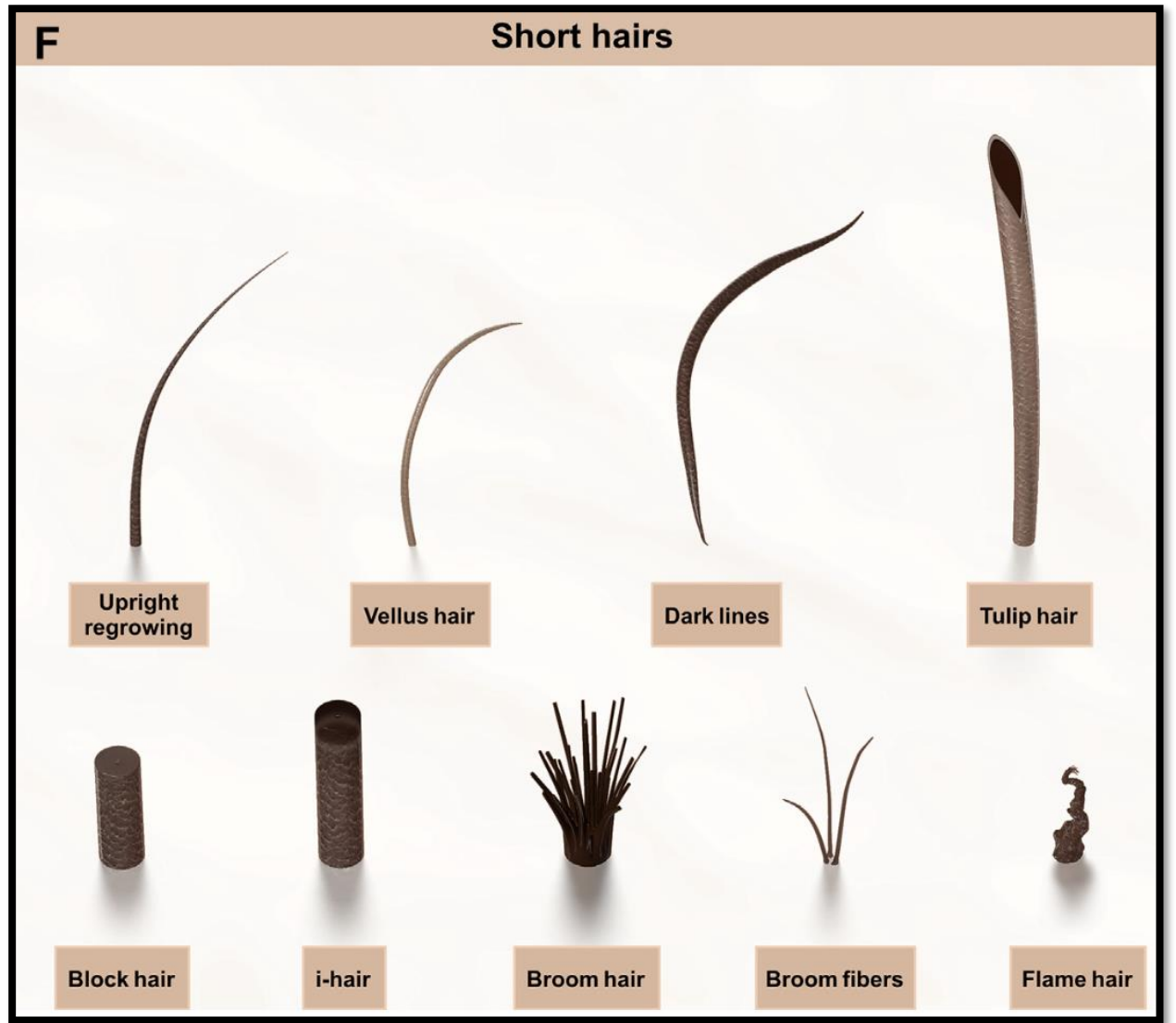
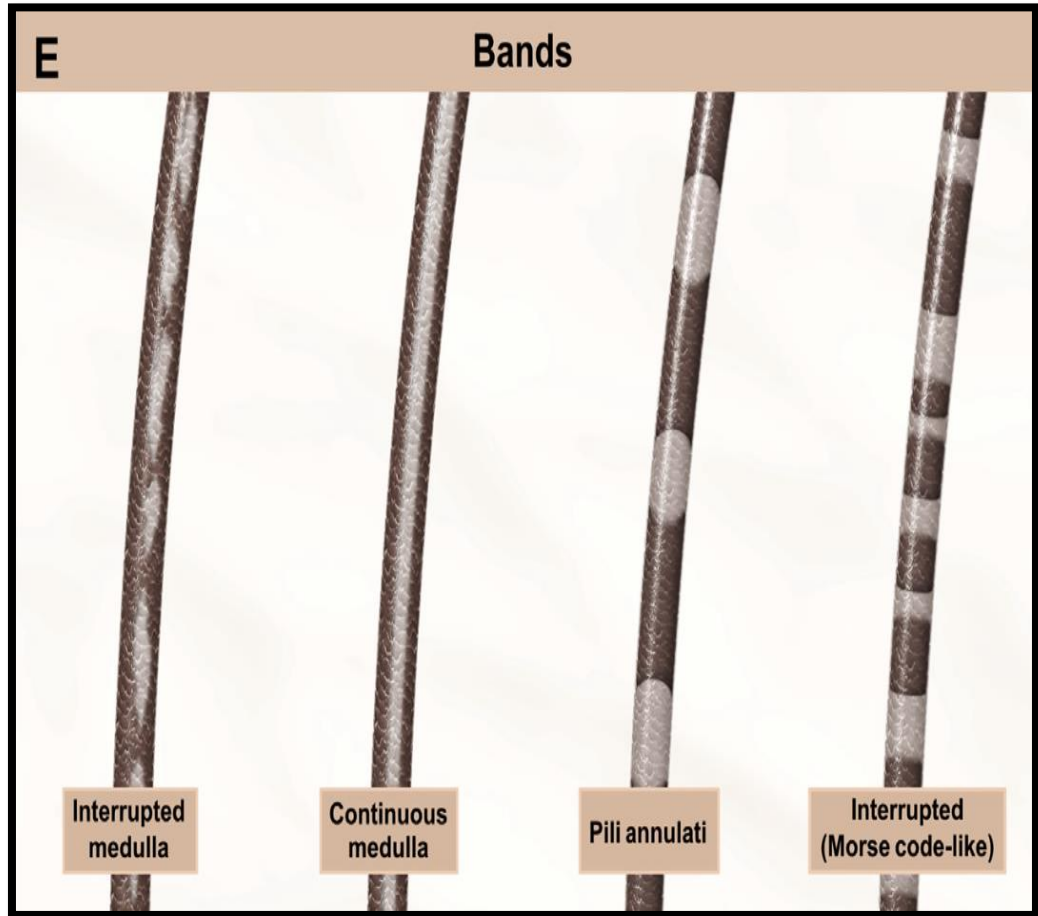
Node-like appearance

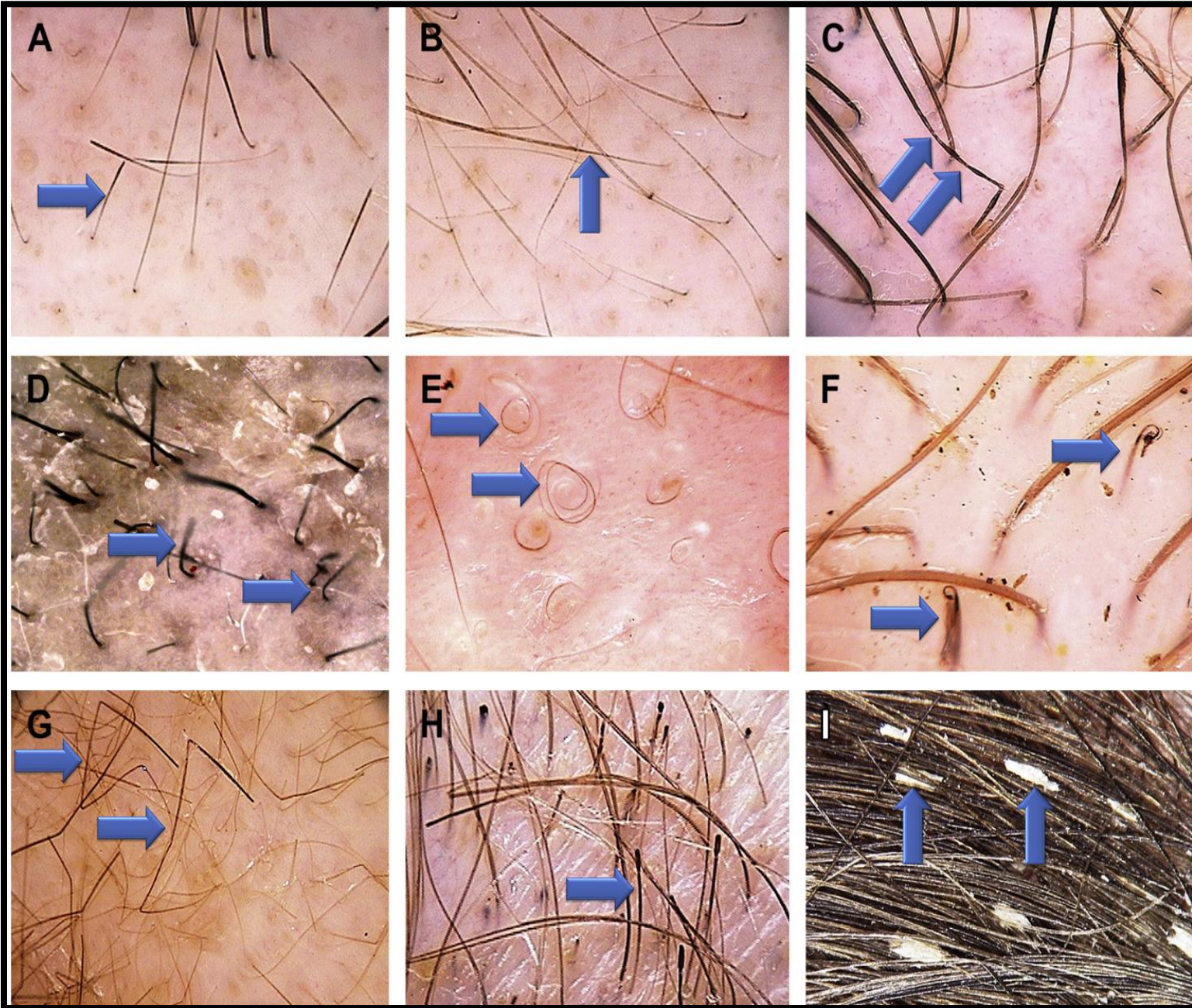


D

Curls and twists







Exclamation mark hairs (arrow, A),  
 Tapered hair (arrow, B),  
 Pohl-Pinkus constrictions (arrows, C),  
 Comma hairs (arrows, D),  
 Pigtail hairs (arrows, E),  
 Coiled hairs (arrows, F),  
 Zigzag hairs (arrows, G),  
 Tulip hairs (arrow, H),  
 Hair casts (arrows, I).

Compiled by:  
 Dr. T. VANI,  
 Dr. Sai deepthi