

DERMA PEARLS : DERMOSCOPY-3

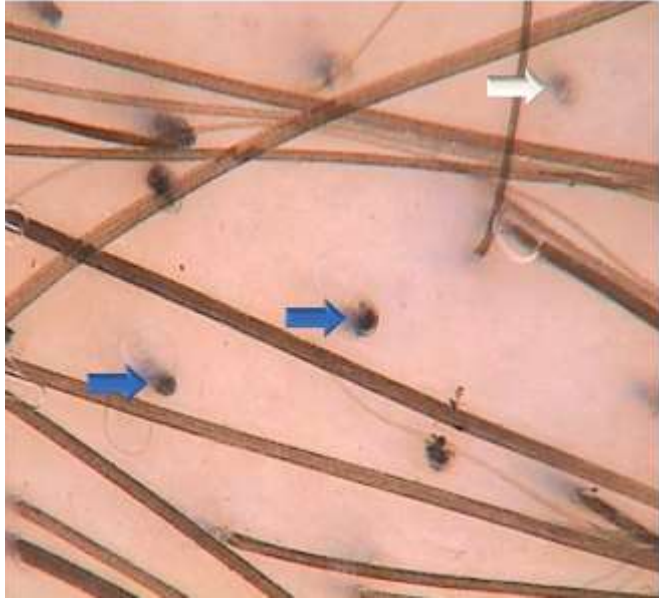
NON CICATRICAL ALOPECIA-1: ALOPECIA AREATA

Trichoscopic Features:

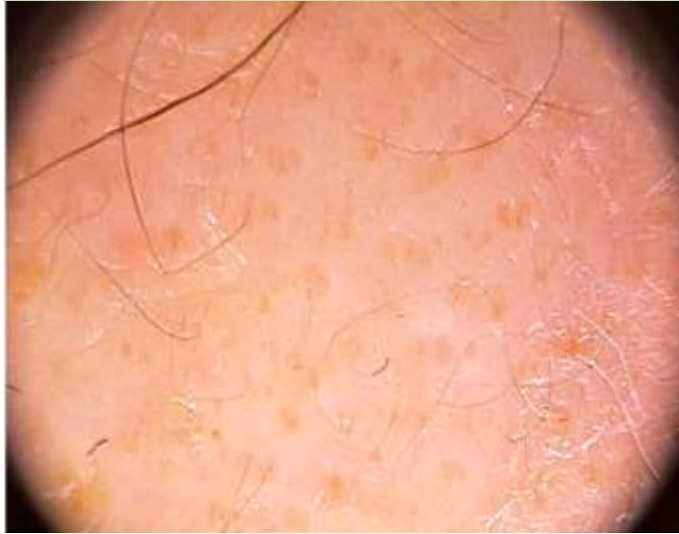
- Black dots
- Exclamation mark hairs
- Coudability hairs
- Yellow dots
- Short vellus hairs
- Broken hairs
- Pohl-Pinkus constrictions
- Zigzag hair
- Tulip hairs
- Trichorrhexis nodosa
- Monilethrix-like hairs



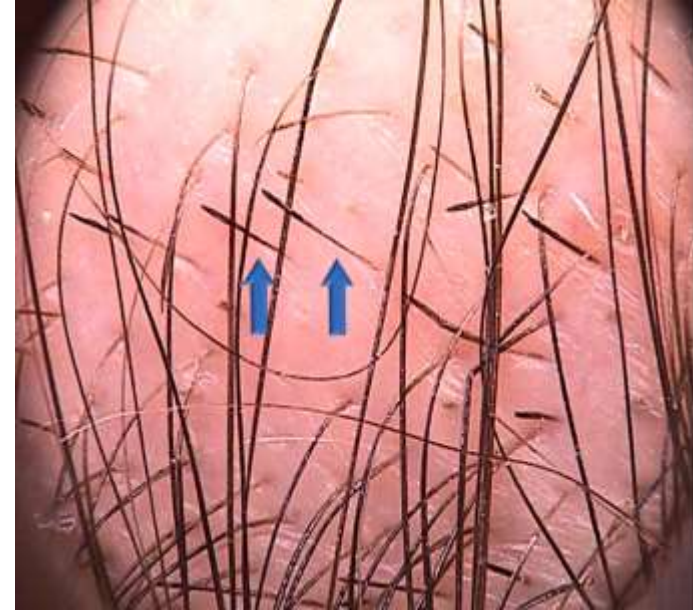
Active hair loss	Longstanding inactive disease	Hair regrowth
<ul style="list-style-type: none"> Black dots Exclamation mark hair Broken hairs Zig-zag Hair Monilethrix-like hairs Trichorrhexis nodosa 	<ul style="list-style-type: none"> Yellow dots Vellus hairs Follicular openings may not be visible 	<ul style="list-style-type: none"> Upright regrowing hairs Pigtail hairs (oval or circular) Vellus hairs



YELLOW DOTS: distended follicular infundibulum with keratin remnants and sebum.

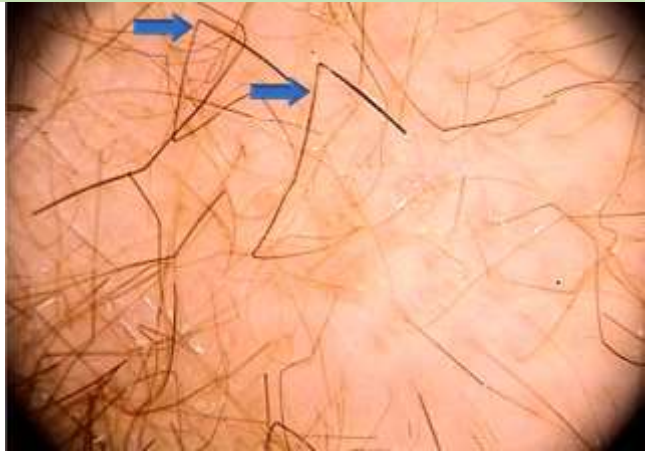


BLACK DOTS: Hair shafts broken at the scalp level

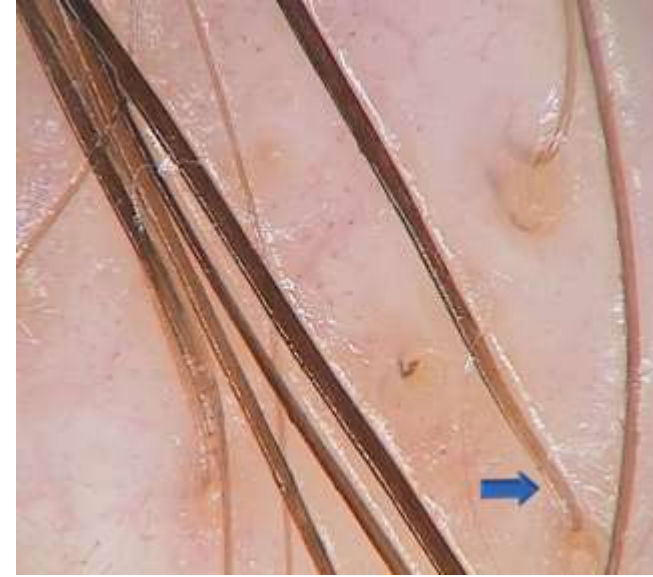


EXCLAMATION HAIR: short hair, thin, hypopigmented at the proximal end and thick, hyperpigmented at the distal end.

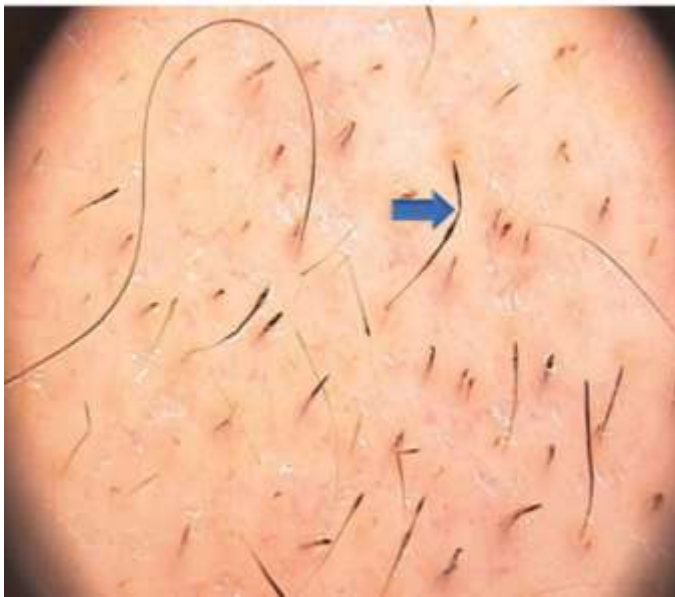
ZIG-ZAG HAIR: Focal weakening of the hair shaft.



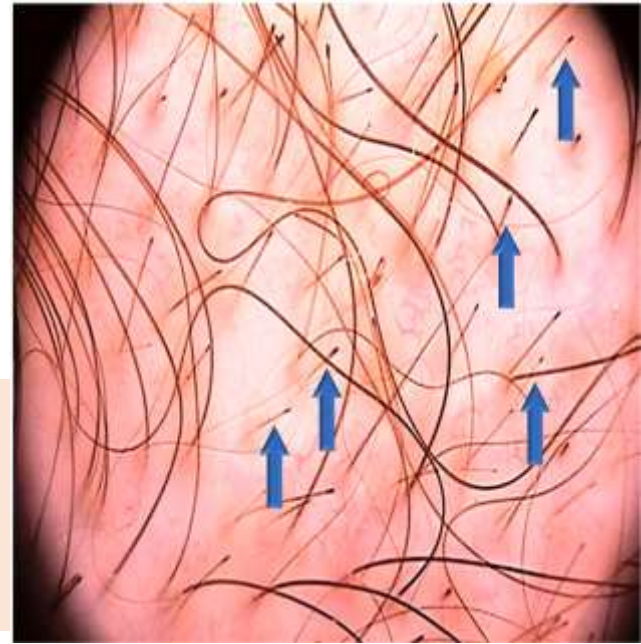
BROKEN HAIR: Hair shafts broken at the same level above the scalp surface



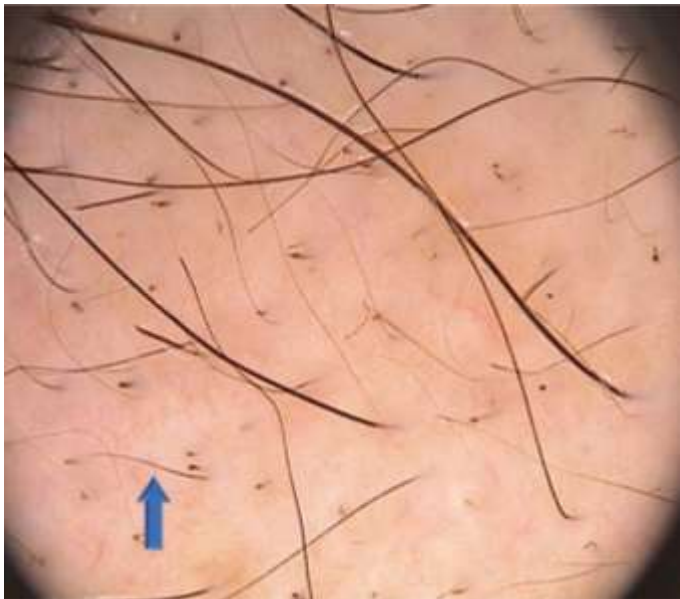
TAPERED HAIR : very long micro – exclamation mark hair; thin at proximal end and become thicker distally which is not visible in the dermoscopic field of view.



MONELITHRIX LIKE HAIRS: Repeated formation of **Pohl-Pinkus constrictions** during the course of a disease with variable activity results in the formation of monilethrix-like hairs



TULIP HAIR: Dark distal end with light coloured hair shafts. The darker tip corresponds to an area of oblique hair rupture



Upright Regrowing Hairs: Anagen hairs are pigmented and sharply pointed

