



DERMA PEARLS : DERMOSCOPY-6

NON CICATRICIAL ALOPECIA -4: TRICHOSCOPIC DIFFERENTIATION OF ANDROGENETIC ALOPECIA AND TELOGEN EFFLUVIUM

In androgenetic alopecia trichoscopy abnormalities are more pronounced in the frontal area compared to the occipital area.

Telogen effluvium characterized by decreased hair density with presence of empty follicles. It can be differentiated from AGA d/t absence of hair shaft diameter variation and peripilar halo and it affects the entire scalp unlike AGA.

On trichoscopy, telogen effluvium is a diagnosis of exclusion.

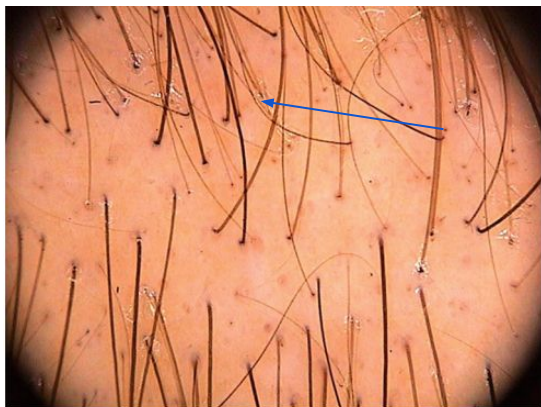
The key difference is that, AGA is a permanent form of hair loss, whereas telogen effluvium is a temporary type of alopecia

Trichoscopic features of telogen effluvium and androgenetic alopecia

Feature	Telogen effluvium	Androgenetic alopecia	Coexistence of telogen effluvium and androgenetic alopecia
Empty hair follicles (including yellow dots)	+	+	+
Follicular units with only one hair in the frontal area	+	++	++
Upright regrowing hairs	++	+/-	+
Thin terminal hairs	+	+	+
Vellus hairs	-	+	+
Hair shaft thickness heterogeneity	-	++	+
Predominance of abnormalities in the frontal region	-	++	+

+ Present, ++ common, - not present

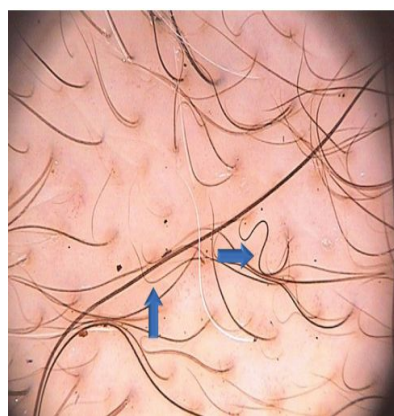
TRICHOSCOPIC
IMAGES OF
ANDROGENETIC
ALOPECIA



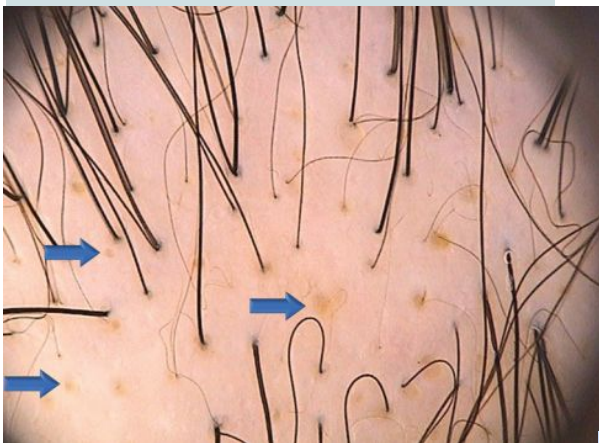
Hair shaft thickness
heterogeneity



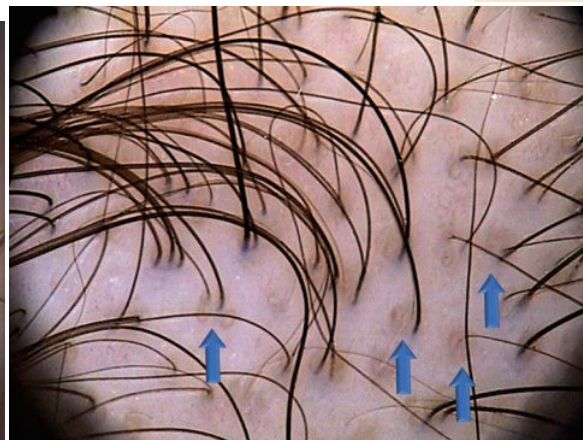
Vellus hairs



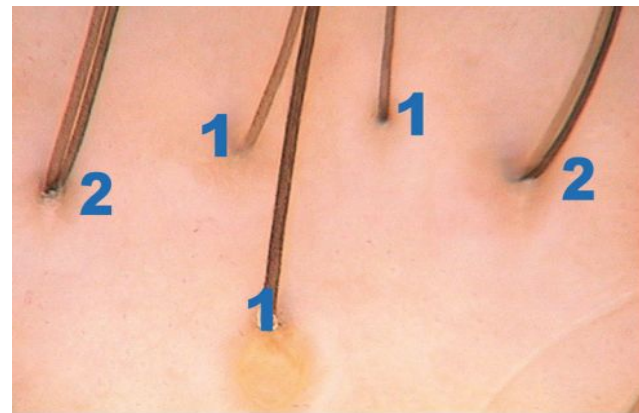
Thin wavy hair



Yellow dots

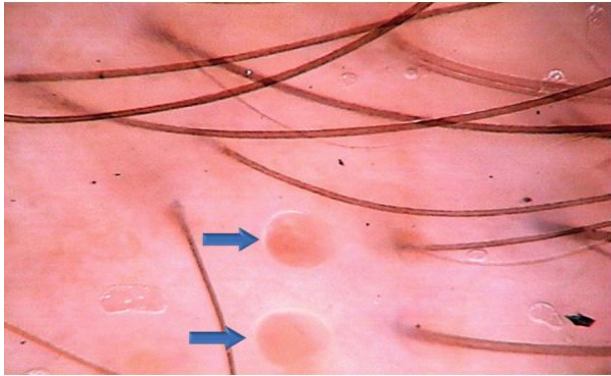


Peripilar sign (perifollicular
discoloration)

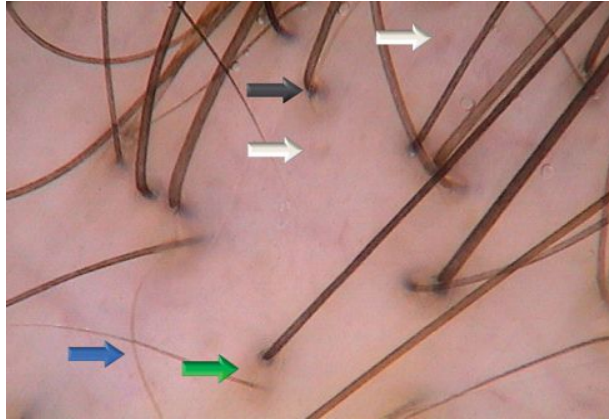


follicular units with only one hair in
androgenetic alopecia

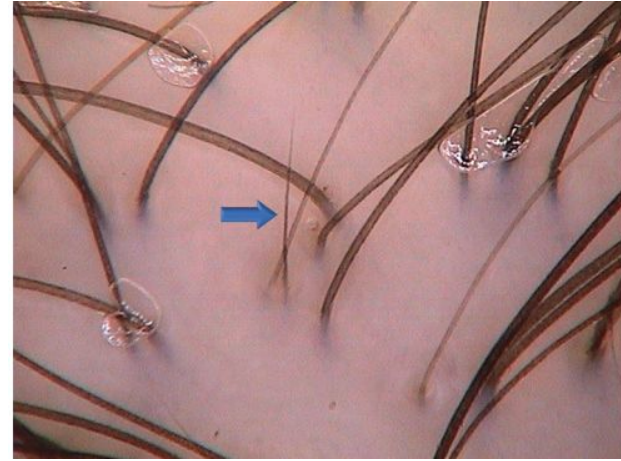
TRICHOSCOPIC IMAGES OF TELOGEN EFFLUVIUM



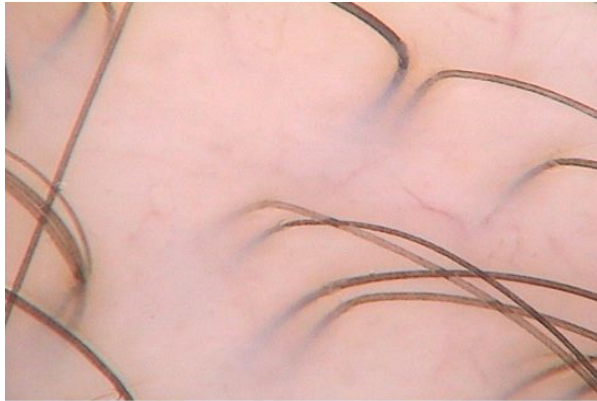
Empty hair follicles



short upright regrowing hairs (blue arrow), empty hair follicles (white arrows), perifollicular discoloration (gray arrow), and follicular units with one hair (green arrow)



Upright regrowing hair



Predominance of follicular units with only hair

Compiled by:
Dr. T. VANI
Dr. Prathyusha

Ref: atlas of trichoscopy; L.Rudnicka et al.