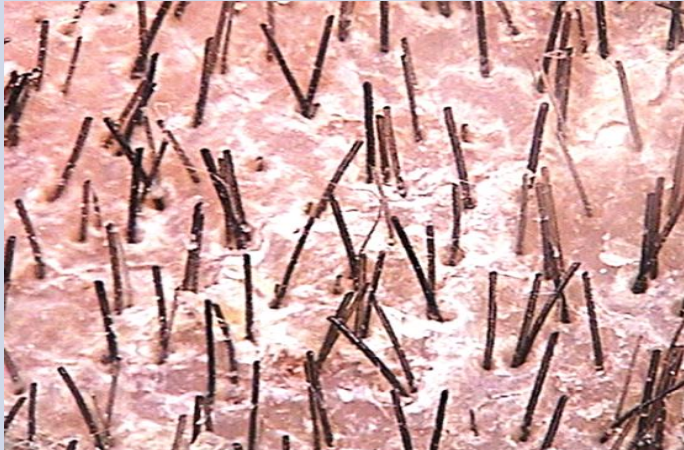



DERMA PEARLS – DERMOSCOPY 7

NON CICATRICAL ALOPECIA-5

SCALP PSORIASIS, SEBORRHEIC CAPITIS & SEBOPSORIASIS

- Scalp psoriasis causes scaling and itching with clinical picture that closely mimics seborrheic capitis. In patients with scalp psoriasis, seborrheic capitis commonly coexists. An overlap between them is known as Sebopsoriasis.
- Trichoscopy differentiate between these conditions depending on **vascular patterns**.

Features	SCALP PSORIASIS	SEBORRHEIC CAPITIS
Scaling	Diffuse, <u>interfollicular</u> , whitish scales with erythematous background 	single/diffuse, <u>Perifollicular</u> yellowish greasy scales 

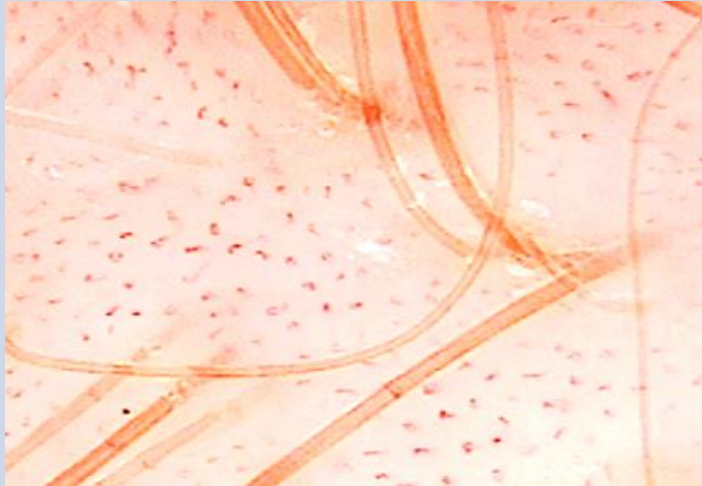
Features

SCALP PSORIASIS

SEBORRHEIC CAPITIS

Vessels

Regular, **homogeneous distribution** of blood vessels between follicular units.



Multicomponent vascular pattern - Areas with multiple dotted, comma, linear vessels in irregular pattern.

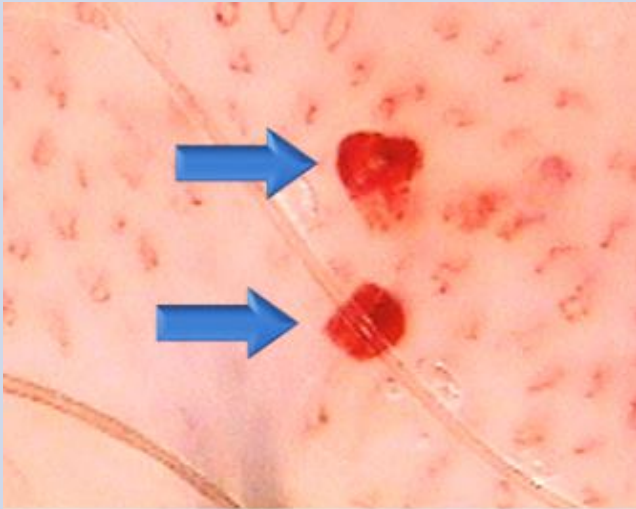


Red dots and globules (circular arrangement or linear arrangement)

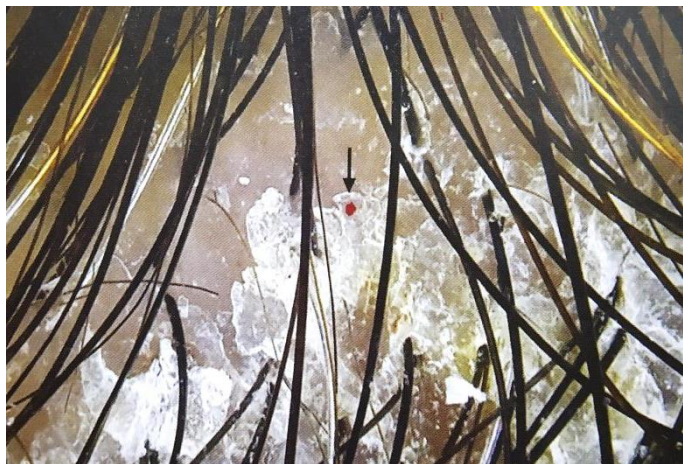


Increased number of thin **arborizing vessels**



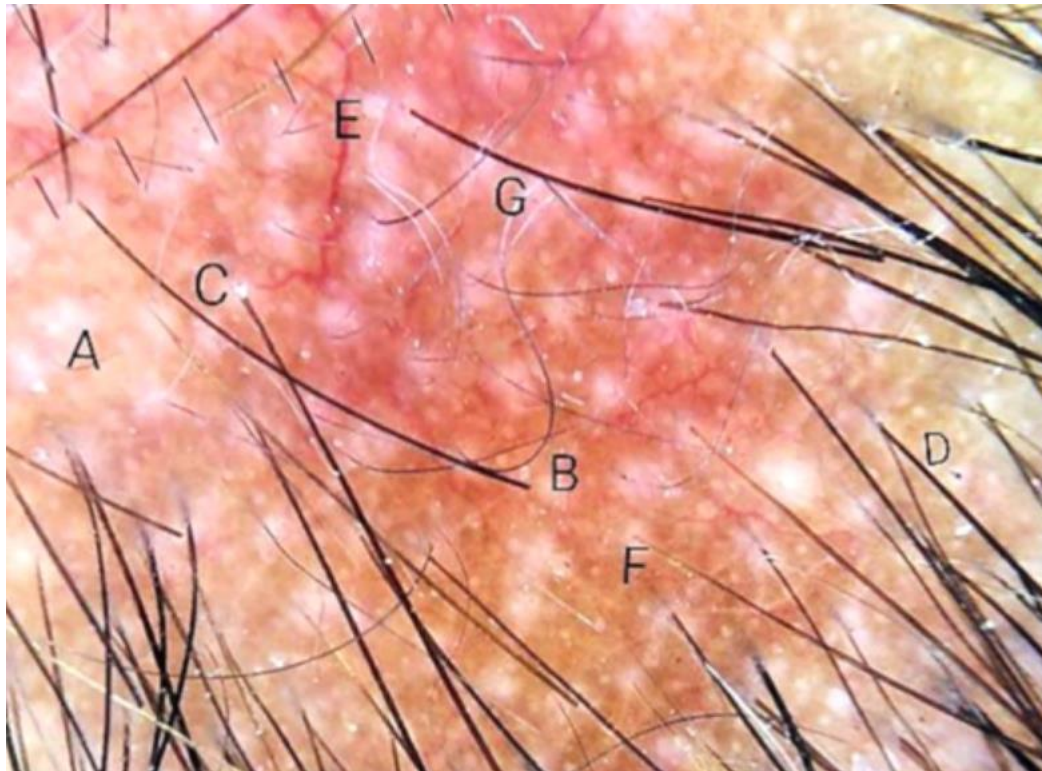
Features	SCALP PSORIASIS	SEBORRHEIC CAPITIS
Blood extravasations	<p>Seen in active phase of psoriasis. They are circular or oval in shape</p>  <p>A microscopic image of the scalp showing several circular, red, hemorrhagic spots (blood extravasations) on a background of inflamed skin. Two blue arrows point to two of these spots.</p>	Uncommon. Linear excoriations.

SEBOPSORIASIS



Yellowish greasy scales as well as whitish scales are present with extravasation of blood in circular shape (psoriatic component)

SYPHILIS – Non scarring alopecia



- A** - Empty hair follicles
- B** - Vellus hair
- C** - Perifollicular hyperkeratosis
- D** - Black dot on the periphery
- E** - Dilated and tortuous vessels
- F** - Erythematous-brownish background
- G** - Hypopigmentation of the hair shafts.

REFERENCES:

- 1) Trichoscopy - A text and atlas; Subrata Malakar
- 2) Bomfim ICC, Ianhez M, Miot HA. Dermatoscopic findings of syphilitic alopecia PMID: 32482551; PMCID: PMC7335854.

COMPILED BY
Dr.T.Vani
Dr.R.Nareshkumar